

## Product datasheet for **AP50881PU-N**

### **RBM48 (Center) Rabbit Polyclonal Antibody**

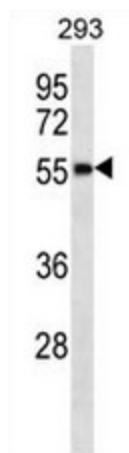
#### **Product data:**

|                         |   |
|-------------------------|---|
| Product Type:           | Primary Antibodies  |
| Applications:           | WB  |
| Recommended Dilution:   | <b>ELISA:</b> 1/1000.<br><b>Western Blot:</b> 1/100 - 1/500.  |
| Reactivity:             | Human   |
| Host:                   | Rabbit  |
| Isotype:                | Ig  |
| Clonality:              | Polyclonal  |
| Immunogen:              | KLH conjugated synthetic peptide between 152-181 amino acids from the Central region of human CG064                               |
| Specificity:            | This antibody reacts to CG064.  |
| Formulation:            | PBS<br>State: Aff - Purified<br>State: Liquid purified Ig fraction<br>Preservative: 0.09% (W/V) sodium azide                      |
| Concentration:          | lot specific  |
| Purification:           | Affinity chromatography on Protein A  |
| Conjugation:            | Unconjugated  |
| Storage:                | Store the antibody undiluted at 2-8°C for one month or (in aliquots) at -20°C for longer.<br>Avoid repeated freezing and thawing. |
| Stability:              | Shelf life: one year from despatch.   |
| Predicted Protein Size: | 41808 Da  |
| Gene Name:              | RNA binding motif protein 48  |
| Database Link:          | <a href="#">Entrez Gene 84060 Human Q5RL73</a>  |
| Synonyms:               | UPF0712 protein C7orf64   |



[View online »](#)

## Product images:



CG064 Antibody (Center) western blot analysis in 293 cell line lysates (35ug/lane). This demonstrates the CG064 antibody detected the CG064 protein (arrow).