

Product datasheet for **AP50878PU-N**

Factor H (CFH) (Center) Rabbit Polyclonal Antibody

Product data:

Product Type:	Primary Antibodies
Applications:	IF, IHC, WB
Recommended Dilution:	ELISA: /1000. Western Blot: 1/100 - 1/500. Immunohistochemistry on paraffin sections: 1/50 - 1/100. Immunofluorescence: 1/10 - 1/50.
Reactivity:	Human
Host:	Rabbit
Isotype:	Ig
Clonality:	Polyclonal
Immunogen:	KLH conjugated synthetic peptide between 751-780 amino acids from the Central region of human CFH
Specificity:	This antibody reacts to CFH.
Formulation:	PBS State: Aff - Purified State: Liquid purified Ig fraction Preservative: 0.09% (W/V) sodium azide
Concentration:	lot specific
Purification:	Affinity chromatography on Protein A
Conjugation:	Unconjugated
Storage:	Store the antibody undiluted at 2-8°C for one month or (in aliquots) at -20°C for longer. Avoid repeated freezing and thawing.
Stability:	Shelf life: one year from despatch.
Predicted Protein Size:	139096 Da
Gene Name:	complement factor H
Database Link:	Entrez Gene 3075 Human P08603



[View online »](#)

Background:

This gene is a member of the Regulator of Complement Activation (RCA) gene cluster and encodes a protein with twenty short consensus repeat (SCR) domains. This protein is secreted into the bloodstream and has an essential role in the regulation of complement activation, restricting this innate defense mechanism to microbial infections. Mutations in this gene have been associated with hemolytic-uremic syndrome (HUS) and chronic hypocomplementemic nephropathy. Alternate transcriptional splice variants, encoding different isoforms, have been characterized.

Synonyms:

CFH, HF, HF1, HF2, H factor 1

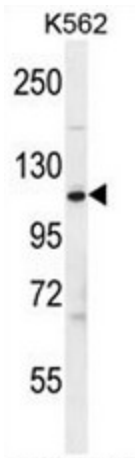
Protein Families:

Druggable Genome, Secreted Protein

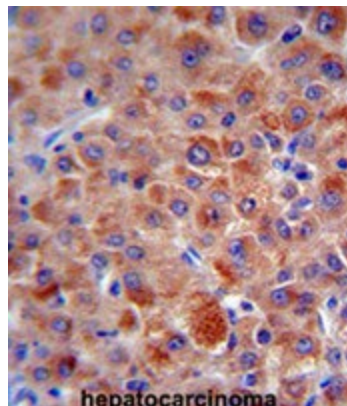
Protein Pathways:

Complement and coagulation cascades

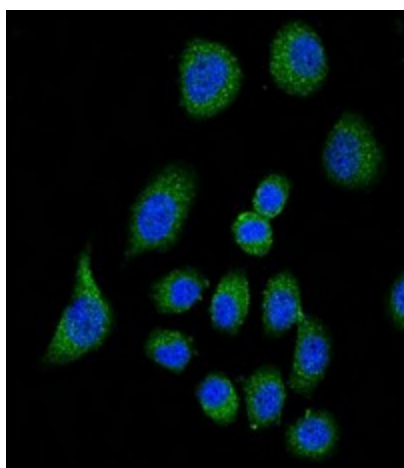
Product images:



CFH Antibody (Center) western blot analysis in K562 cell line lysates (35ug/lane). This demonstrates the CFH antibody detected the CFH protein (arrow).



CFH antibody (Center) immunohistochemistry analysis in formalin fixed and paraffin embedded human hepatocarcinoma followed by peroxidase conjugation of the secondary antibody and DAB staining. This data demonstrates the use of the CFH antibody (Center) for immunohistochemistry. Clinical relevance has not been evaluated.



Confocal immunofluorescent analysis of CFH Antibody (Center) with A549 cell followed by Alexa Fluor® 489-conjugated goat anti-rabbit IgG (green). DAPI was used to stain the cell nuclear (blue).