

## Product datasheet for **AP50877PU-N**

### Factor D (CFD) (N-term) Rabbit Polyclonal Antibody

#### Product data:

Product Type:	Primary Antibodies
Applications:	IHC, WB
Recommended Dilution:	ELISA: 1/1,000. Western blotting: 1/100-1/500. Immunohistochemistry: 1/50-1/100.
Reactivity:	Human
Host:	Rabbit
Isotype:	Ig
Clonality:	Polyclonal
Immunogen:	KLH conjugated synthetic peptide between 75-107 amino acids from the N-terminal region of Human CFD
Specificity:	Recognizes CFD (N-term).
Formulation:	PBS with 0.09% (W/V) Sodium Azide as preservative State: Aff - Purified State: Liquid purified Ig fraction
Concentration:	lot specific
Purification:	Protein A column followed by peptide Affinity purification
Conjugation:	Unconjugated
Storage:	Store the antibody undiluted at 2-8°C for one month or (in aliquots) at -20°C for longer. Avoid repeated freezing and thawing.
Stability:	Shelf life: one year from despatch.
Gene Name:	complement factor D
Database Link:	<a href="#">Entrez Gene 1675 Human P00746</a>



[View online »](#)

**Background:**

The protein encoded by this gene is a member of the trypsin family of peptidases. The encoded protein is a component of the alternative complement pathway best known for its role in humoral suppression of infectious agents. This protein is also a serine protease that is secreted by adipocytes into the bloodstream. Finally, the encoded protein has a high level of expression in fat, suggesting a role for adipose tissue in immune system biology.

**Synonyms:**

Properdin factor D, Adipsin, CFD, DF, PFD

**Note:**

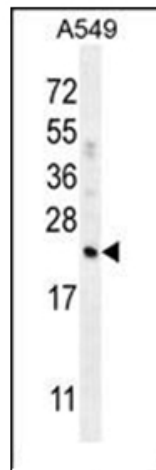
**Molecular Weight:** 27033 Da

**Protein Families:**

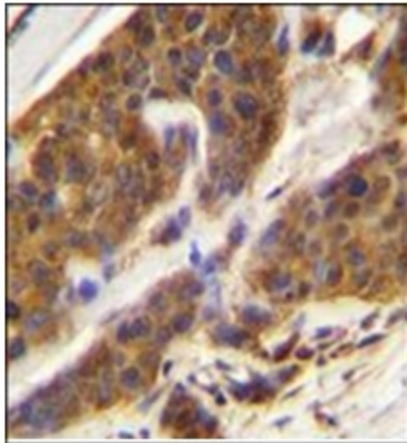
Druggable Genome, Protease, Secreted Protein

**Protein Pathways:**

Complement and coagulation cascades

**Product images:**


Western blot analysis of CFD Antibody (N-term) in A549 cell line lysates (35ug/lane). This demonstrates the CFD antibody detected the CFD protein (arrow).



Immunohistochemistry analysis in Formalin Fixed, Paraffin Embedded Human bladder carcinoma stained with CFD Antibody (N-term) followed by peroxidase conjugation of the secondary antibody and DAB staining. This data demonstrates the use of CFD Antibody (N-term) for immunohistochemistry. Clinical relevance has not been evaluated.