

Product datasheet for **AP50875PU-N**

RRP36 (C-term) Rabbit Polyclonal Antibody

Product data:

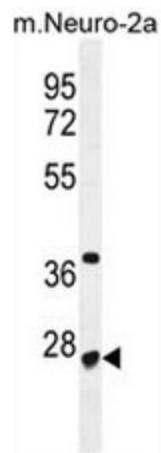
Product Type:	Primary Antibodies
Applications:	IHC, WB
Recommended Dilution:	ELISA: 1/1000. Western Blot: 1/100 - 1/500. Immunohistochemistry on paraffin sections: 1/10 - 1/50.
Reactivity:	Human, Mouse
Host:	Rabbit
Isotype:	Ig
Clonality:	Polyclonal
Immunogen:	KLH conjugated synthetic peptide between 233-263 amino acids from the C-terminal region of human CF153
Specificity:	This antibody reacts to CF153.
Formulation:	PBS State: Aff - Purified State: Liquid purified Ig fraction Preservative: 0.09% (W/V) sodium azide
Concentration:	lot specific
Purification:	Affinity chromatography on Protein A
Conjugation:	Unconjugated
Storage:	Store the antibody undiluted at 2-8°C for one month or (in aliquots) at -20°C for longer. Avoid repeated freezing and thawing.
Stability:	Shelf life: one year from despatch.
Predicted Protein Size:	29823 Da
Gene Name:	ribosomal RNA processing 36
Database Link:	Entrez Gene 88745 Human Q96EU6
Background:	RRP36 functions at an early stage in the processing of 35S preribosomal RNA into the mature 18S species (Gerus et al., 2010 [PubMed 20038530]).



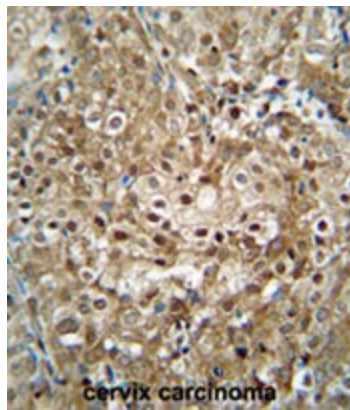
[View online »](#)

Synonyms: Ribosomal RNA processing protein 36 homolog, RRP36

Product images:



CF153 Antibody (C-term) western blot analysis in mouse Neuro-2a cell line lysates (35ug/lane). This demonstrates the CF153 antibody detected the CF153 protein (arrow).



CF153 antibody (C-term) immunohistochemistry analysis in formalin fixed and paraffin embedded human cervix carcinoma followed by peroxidase conjugation of the secondary antibody and DAB staining. This data demonstrates the use of the CF153 antibody (C-term) for immunohistochemistry. Clinical relevance has not been evaluated.