

Product datasheet for **AP50874PU-N**

C6orf150 (MB21D1) (Center) Rabbit Polyclonal Antibody

Product data:

Product Type:	Primary Antibodies
Applications:	FC, WB
Recommended Dilution:	ELISA: 1/1000. Western Blot: 1/1000. Flow Cytometry: 1/10-1/50.
Reactivity:	Human
Host:	Rabbit
Isotype:	Ig
Clonality:	Polyclonal
Immunogen:	KLH conjugated synthetic peptide between 266-295 amino acids from the Central region of Human CF150
Specificity:	This antibody recognizes Human C6orf150 (CF150). Other species not tested.
Formulation:	PBS State: Aff - Purified State: Liquid purified Ig fraction Preservative: 0.09% (W/V) Sodium Azide
Concentration:	lot specific
Purification:	Protein A Chromatography followed by peptide affinity purification
Conjugation:	Unconjugated
Storage:	Store undiluted at 2-8°C for one month or (in aliquots) at -20°C for longer. Avoid repeated freezing and thawing.
Stability:	Shelf life: one year from despatch.
Predicted Protein Size:	58814 Da
Gene Name:	Mab-21 domain containing 1
Database Link:	Entrez Gene 115004 Human Q8N884



[View online »](#)

Background:

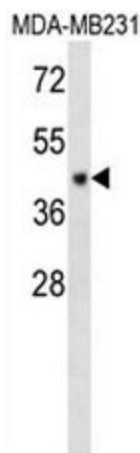
Function: Nucleotidyltransferase that catalyzes the formation of cyclic GMP-AMP (cGAMP) from ATP and GTP. Catalysis involves both the formation of a 2',5' phosphodiester linkage at the GpA step and the formation of a 3',5' phosphodiester linkage at the ApG step, producing c[G(2',5')pA(3',5')p]. Has antiviral activity by acting as a key cytosolic DNA sensor, the presence of double-stranded DNA (dsDNA) in the cytoplasm being a danger signal that triggers the immune responses. Binds cytosolic DNA directly, leading to activation and synthesis of cGAMP, a second messenger that binds to and activates TMEM173/STING, thereby triggering type-I interferon production.

Cellular Location: Cytoplasm, cytosol.

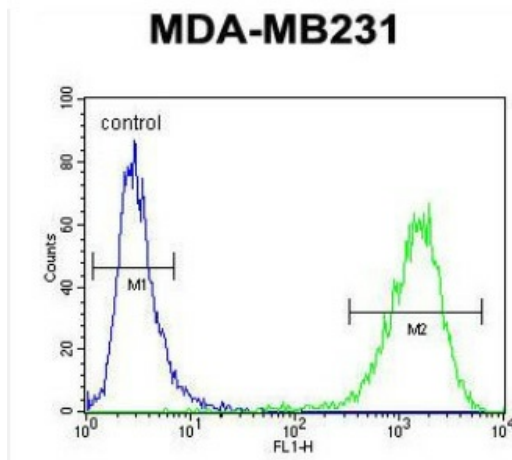
Tissue Location: Expressed in the monocytic cell line THP1.

Synonyms:

C6orf150; cGAS; h-cGAS

Product images:


Western blot analysis in MDA-MB231 cell line lysates using CF150 Antibody (Center) (35ug/lane). This demonstrates the CF150 antibody detected the CF150 protein (arrow).



Flow Cytometric analysis of MDA-MB231 cells using CF150 Antibody (Center) (right histogram) compared to a negative control cell (left histogram). FITC-conjugated goat-anti-rabbit secondary antibodies were used for the analysis.