

Product datasheet for **AP50873PU-N**

C6orf97 (CCDC170) (C-term) Rabbit Polyclonal Antibody

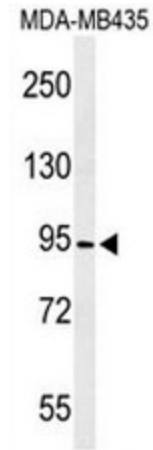
Product data:

Product Type:	Primary Antibodies
Applications:	WB
Recommended Dilution:	ELISA: 1/1000. Western Blot: 1/100 - 1/500.
Reactivity:	Human
Host:	Rabbit
Isotype:	Ig
Clonality:	Polyclonal
Immunogen:	KLH conjugated synthetic peptide between 601~631 amino acids from the C-terminal region of human CF097
Specificity:	This antibody reacts to CF097.
Formulation:	PBS State: Aff - Purified State: Liquid purified Ig fraction Preservative: 0.09% (W/V) sodium azide
Concentration:	lot specific
Purification:	Affinity chromatography on Protein A
Conjugation:	Unconjugated
Storage:	Store the antibody undiluted at 2-8°C for one month or (in aliquots) at -20°C for longer. Avoid repeated freezing and thawing.
Stability:	Shelf life: one year from despatch.
Predicted Protein Size:	82277 Da
Gene Name:	coiled-coil domain containing 170
Database Link:	Entrez Gene 80129 Human Q8IYT3
Synonyms:	Gm221
Protein Families:	Druggable Genome



[View online »](#)

Product images:



Western blot analysis of CF097 Antibody (C-term) in MDA-MB435 cell line lysates (35ug/lane). CF097 (arrow) was detected using the purified Pab.