

## Product datasheet for **AP50872PU-N**

### **C6orf62 (Center) Rabbit Polyclonal Antibody**

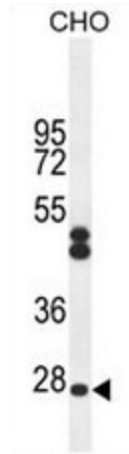
#### **Product data:**

Product Type:	Primary Antibodies
Applications:	IHC, WB
Recommended Dilution:	<b>ELISA:</b> 1/1000. <b>Western Blot:</b> 1/100 - 1/500. <b>Immunohistochemistry on paraffin sections:</b> 1/50 - 1/100.
Reactivity:	Hamster, Human, Mouse
Host:	Rabbit
Isotype:	Ig
Clonality:	Polyclonal
Immunogen:	KLH conjugated synthetic peptide between 118-147 amino acids from the Central region of human CF062
Formulation:	PBS State: Aff - Purified State: Liquid purified Ig fraction Preservative: 0.09% (W/V) sodium azide
Concentration:	lot specific
Purification:	Affinity chromatography on Protein A
Conjugation:	Unconjugated
Storage:	Store the antibody undiluted at 2-8°C for one month or (in aliquots) at -20°C for longer. Avoid repeated freezing and thawing.
Stability:	Shelf life: one year from despatch.
Gene Name:	chromosome 6 open reading frame 62
Database Link:	<a href="#">Entrez Gene 81688 Human</a> <a href="#">Q9GZU0</a>
Synonyms:	Uncharacterized protein C6orf62,C6orf62,XTP12
Note:	<b>Molecular Weight:</b> 27083 Da

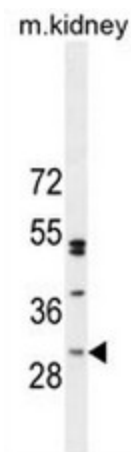


[View online »](#)

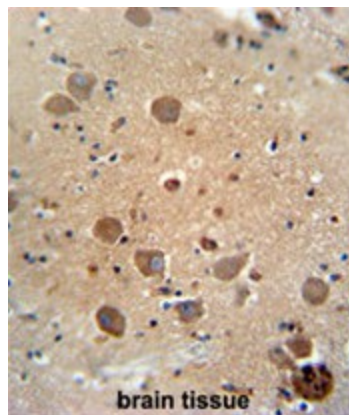
## Product images:



CF062 Antibody (Center) (Cat. #AP50872PU-N) western blot analysis in CHO cell line lysates (35ug/lane). This demonstrates the CF062 antibody detected the CF062 protein (arrow).



CF062 Antibody (Center) (Cat. #AP50872PU-N) western blot analysis in mouse kidney tissue lysates (35ug/lane). This demonstrates the CF062 antibody detected the CF062 protein (arrow).



CF062 antibody (Center) (Cat. #AP50872PU-N) immunohistochemistry analysis in formalin fixed and paraffin embedded human brain tissue followed by peroxidase conjugation of the secondary antibody and DAB staining. This data demonstrates the use of the CF062 antibody (Center) for immunohistochemistry. Clinical relevance has not been evaluated.