

## Product datasheet for **AP50871PU-N**

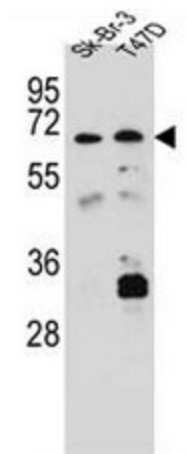
### **CES4A (C-term) Rabbit Polyclonal Antibody**

#### **Product data:**

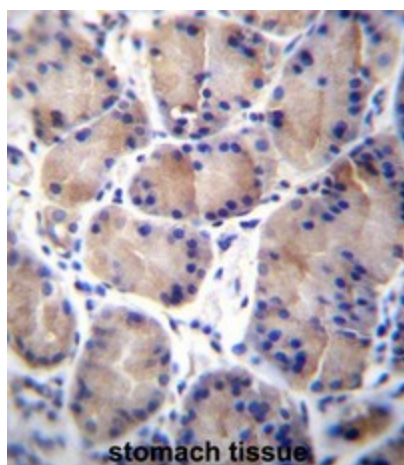
Product Type:	Primary Antibodies
Applications:	IHC, WB
Recommended Dilution:	<b>ELISA:</b> 1/1000. <b>Western Blot:</b> 1/100 - 1/500.
Reactivity:	Human
Host:	Rabbit
Isotype:	Ig
Clonality:	Polyclonal
Immunogen:	KLH conjugated synthetic peptide between 532-561 amino acids from the C-terminal region of human CES8
Specificity:	This antibody reacts to CES8.
Formulation:	PBS State: Aff - Purified State: Liquid purified Ig fraction Preservative: 0.09% (W/V) sodium azide
Concentration:	lot specific
Purification:	Affinity chromatography on Protein A
Conjugation:	Unconjugated
Storage:	Store the antibody undiluted at 2-8°C for one month or (in aliquots) at -20°C for longer. Avoid repeated freezing and thawing.
Stability:	Shelf life: one year from despatch.
Predicted Protein Size:	42kd Isoform 6. 63529 Da
Gene Name:	carboxylesterase 4A
Database Link:	<a href="#">Entrez Gene 283848 Human Q5XG92</a>
Synonyms:	CES4A, CES8
Protein Families:	Druggable Genome



[View online »](#)

**Product images:**

CES8 Antibody (C-term) western blot analysis in Sk-Br-3, T47D cell line lysates (35ug/lane). This demonstrates the CES8 antibody detected the CES8 protein (arrow).



CES8 Antibody (C-term) immunohistochemistry analysis in formalin fixed and paraffin embedded human stomach tissue followed by peroxidase conjugation of the secondary antibody and DAB staining. This data demonstrates the use of CES8 Antibody (C-term) for immunohistochemistry. Clinical relevance has not been evaluated.