

Product datasheet for **AP50870PU-N**

Carboxylesterase 7 (CES5A) (Center) Rabbit Polyclonal Antibody

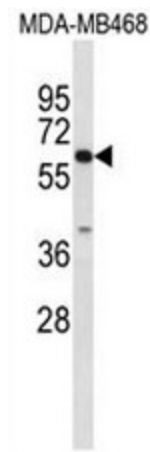
Product data:

Product Type:	Primary Antibodies
Applications:	IHC, WB
Recommended Dilution:	ELISA: 1/1000. Western Blot: 1/100 - 1/500. Immunohistochemistry on paraffin sections: 1/50 - 1/100.
Reactivity:	Human
Host:	Rabbit
Isotype:	Ig
Clonality:	Polyclonal
Immunogen:	KLH conjugated synthetic peptide selected from the Center region of human CES7
Specificity:	This antibody reacts to CES7.
Formulation:	PBS State: Aff - Purified State: Liquid purified Ig fraction Preservative: 0.09% (W/V) sodium azide
Concentration:	lot specific
Purification:	Affinity chromatography on Protein A
Conjugation:	Unconjugated
Storage:	Store the antibody undiluted at 2-8°C for one month or (in aliquots) at -20°C for longer. Avoid repeated freezing and thawing.
Stability:	Shelf life: one year from despatch.
Predicted Protein Size:	63926 Da
Gene Name:	carboxylesterase 5A
Database Link:	Entrez Gene 221223 Human Q6NT32
Background:	CES7 is involved in the detoxification of xenobiotics and in the activation of ester and amide prodrugs (By similarity).

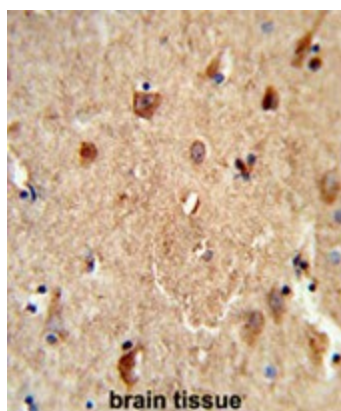


[View online »](#)

Synonyms: Carboxylesterase 7, Cauxin
Protein Families: Druggable Genome
Protein Pathways: Drug metabolism - other enzymes

Product images:

Western blot analysis of CES7 Antibody (Center) in MDA-MB468 cell line lysates (35ug/lane). CES7 (arrow) was detected using the purified Pab.



Formalin-fixed and paraffin-embedded human brain tissue reacted with CES7 Antibody (Center), which was peroxidase-conjugated to the secondary antibody, followed by DAB staining. This data demonstrates the use of this antibody for immunohistochemistry; clinical relevance has not been evaluated.