

## Product datasheet for **AP50869PU-N**

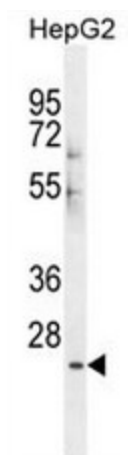
### CES4 (N-term) Rabbit Polyclonal Antibody

#### Product data:

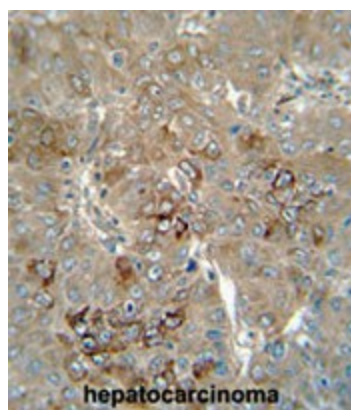
Product Type:	Primary Antibodies
Applications:	IHC, WB
Recommended Dilution:	<b>ELISA:</b> 1/1000. <b>Western Blot:</b> 1/100 - 1/500. <b>Immunohistochemistry on paraffin sections:</b> 1/50 - 1/100.
Reactivity:	Human
Host:	Rabbit
Isotype:	Ig
Clonality:	Polyclonal
Immunogen:	KLH conjugated synthetic peptide between 50-78 amino acids from the N-terminal region of human CES4
Formulation:	PBS State: Aff - Purified State: Liquid purified Ig fraction Preservative: 0.09% (W/V) sodium azide
Concentration:	lot specific
Purification:	Affinity chromatography on Protein A
Conjugation:	Unconjugated
Storage:	Store the antibody undiluted at 2-8°C for one month or (in aliquots) at -20°C for longer. Avoid repeated freezing and thawing.
Stability:	Shelf life: one year from despatch.
Predicted Protein Size:	30679 Da
Database Link:	<a href="#">Q9UKY3</a>
Synonyms:	Putative inactive carboxylesterase 4



[View online »](#)

**Product images:**

CES4 Antibody (N-term) (Cat. #AP50869PU-N) western blot analysis in HepG2 cell line lysates (35g/lane). This demonstrates the CES4 antibody detected the CES4 protein (arrow).



CES4 antibody (N-term) (Cat. #AP50869PU-N) immunohistochemistry analysis in formalin fixed and paraffin embedded human hepatocarcinoma followed by peroxidase conjugation of the secondary antibody and DAB staining. This data demonstrates the use of the CES4