

Product datasheet for **AP50867PU-N**

CES2 (Center) Rabbit Polyclonal Antibody

Product data:

Product Type:	Primary Antibodies
Applications:	FC, IHC, WB
Recommended Dilution:	ELISA: 1/1000. Western blot: 1/100 - 1/500. Immunohistochemistry on paraffin sections: 1/50 - 1/100.
Reactivity:	Human
Host:	Rabbit
Isotype:	Ig
Clonality:	Polyclonal
Immunogen:	KLH conjugated synthetic peptide between 343-373 amino acids from the Central region of human CES2
Specificity:	This antibody reacts to CES2.
Formulation:	PBS State: Aff - Purified State: Liquid purified Ig fraction Preservative: 0.09% (W/V) sodium azide
Concentration:	lot specific
Purification:	Affinity chromatography on Protein A
Conjugation:	Unconjugated
Storage:	Store undiluted at 2-8°C for one month or (in aliquots) at -20°C for longer. Avoid repeated freezing and thawing.
Stability:	Shelf life: one year from despatch.
Predicted Protein Size:	61807 Da
Gene Name:	carboxylesterase 2
Database Link:	Entrez Gene 8824 Human O00748



[View online »](#)

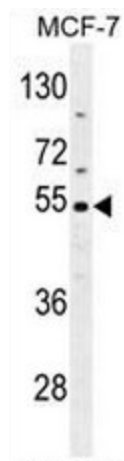
Background: CES2 is a member of the carboxylesterase large family. The family members are responsible for the hydrolysis or transesterification of various xenobiotics, such as cocaine and heroin, and endogenous substrates with ester, thioester, or amide bonds. They may participate in fatty acyl and cholesterol ester metabolism, and may play a role in the blood-brain barrier system. The protein encoded by this gene is the major intestinal enzyme and functions in intestine drug clearance.

Synonyms: Carboxylesterase 2, CE-2, hCE-2

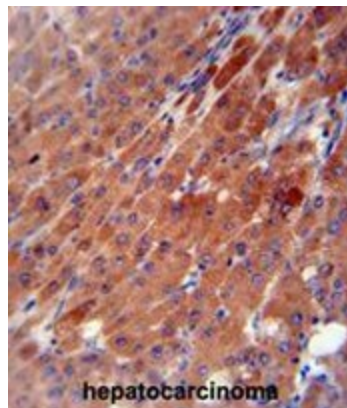
Protein Families: Druggable Genome

Protein Pathways: Drug metabolism - other enzymes

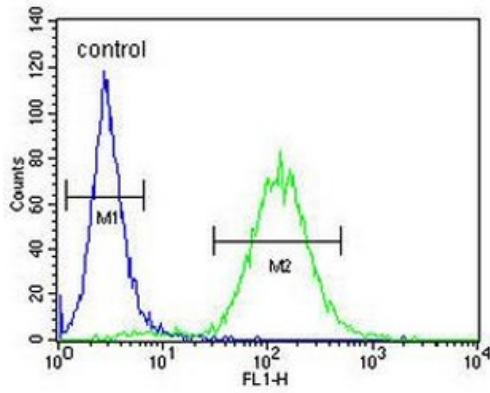
Product images:



CES2 Antibody (Center) western blot analysis in MCF-7 cell line lysates (35ug/lane). This demonstrates the CES2 antibody detected the CES2 protein (arrow).



CES2 antibody (Center) immunohistochemistry analysis in formalin fixed and paraffin embedded human hepatocarcinoma followed by peroxidase conjugation of the secondary antibody and DAB staining. This data demonstrates the use of the CES2 antibody (Center) for immunohistochemistry. Clinical relevance has not been evaluated.

MCF-7

CES2 Antibody (Center) flow cytometric analysis of MCF-7 cells (right histogram) compared to a negative control cell (left histogram). FITC-conjugated goat-anti-rabbit secondary antibodies were used for the analysis.