

Product datasheet for **AP50865PU-N**

CEPT1 (N-term) Rabbit Polyclonal Antibody

Product data:

Product Type:	Primary Antibodies
Applications:	IHC, WB
Recommended Dilution:	ELISA: 1/1000. Western blot: 1/100 - 1/500. Immunohistochemistry on paraffin sections: 1/50 - 1/100.
Reactivity:	Human
Host:	Rabbit
Isotype:	Ig
Clonality:	Polyclonal
Immunogen:	KLH conjugated synthetic peptide between 36-65 amino acids from the N-terminal region of human CEPT1
Specificity:	This antibody reacts to CEPT1.
Formulation:	PBS State: Aff - Purified State: Liquid purified Ig fraction Preservative: 0.09% (W/V) sodium azide.
Concentration:	lot specific
Purification:	Affinity chromatography on Protein A
Conjugation:	Unconjugated
Storage:	Store undiluted at 2-8°C for one month or (in aliquots) at -20°C for longer. Avoid repeated freezing and thawing.
Stability:	Shelf life: one year from despatch.
Predicted Protein Size:	46554 Da
Gene Name:	choline/ethanolamine phosphotransferase 1
Database Link:	Entrez Gene 10390 Human Q9Y6K0



[View online »](#)

Background:

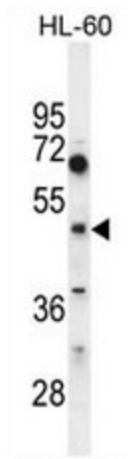
Cholinephosphotransferase catalyses the final step in the synthesis of phosphatidylcholine by the transfer of phosphocholine from CDP-choline to diacylglycerol. The synthesis of phosphatidylethanolamine by ethanolaminephosphotransferase occurs using an analogous reaction. This gene codes for a choline/ethanolaminephosphotransferase. The protein can synthesize either choline- or ethanolamine- containing phospholipids. Two alternatively spliced transcripts encoding the same isoform have been identified.

Synonyms:

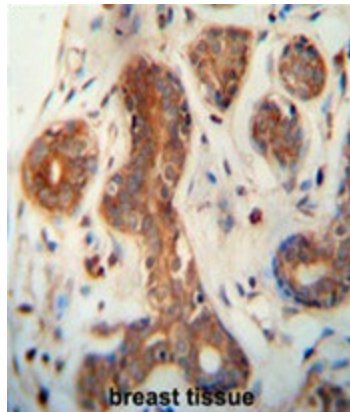
Choline/ethanolaminephosphotransferase 1

Protein Families:

Transmembrane

Product images:

CEPT1 Antibody (N-term) western blot analysis in HL60 cell line lysates (35ug/lane). This demonstrates the CEPT1 antibody detected the CEPT1 protein (arrow).



CEPT1 antibody (N-term) immunohistochemistry analysis in formalin fixed and paraffin embedded human breast tissue followed by peroxidase conjugation of the secondary antibody and DAB staining. This data demonstrates the use of the CEPT1 antibody (N-term) for immunohistochemistry. Clinical relevance has not been evaluated.