

Product datasheet for **AP50863PU-N**

CEP72 (Center) Rabbit Polyclonal Antibody

Product data:

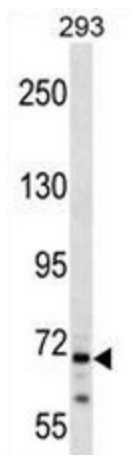
Product Type:	Primary Antibodies
Applications:	WB
Recommended Dilution:	ELISA: 1/1000. Western blot: 1/100 - 1/500.
Reactivity:	Human
Host:	Rabbit
Isotype:	Ig
Clonality:	Polyclonal
Immunogen:	KLH conjugated synthetic peptide between 230-259 amino acids from the Central region of human CEP72
Specificity:	This antibody reacts to CEP72.
Formulation:	PBS State: Aff - Purified State: Liquid purified Ig fraction Preservative: 0.09% (W/V) sodium azide
Concentration:	lot specific
Purification:	Affinity chromatography on Protein A
Conjugation:	Unconjugated
Storage:	Store undiluted at 2-8°C for one month or (in aliquots) at -20°C for longer. Avoid repeated freezing and thawing.
Stability:	Shelf life: one year from despatch.
Predicted Protein Size:	71718 Da
Gene Name:	centrosomal protein 72
Database Link:	Entrez Gene 55722 Human Q9P209
Background:	CEP72 is a member of the leucine-rich-repeat (LRR) superfamily of proteins. The protein is localized to the centrosome, a non-membraneous organelle that functions as the major microtubule-organizing center in animal cells.



[View online »](#)

Synonyms: Centrosomal protein of 72 kDa, KIAA1519

Product images:



CEP72 Antibody (Center) western blot analysis in 293 cell line lysates (35ug/lane). This demonstrates the CEP72 antibody detected the CEP72 protein (arrow).