

Product datasheet for **AP50862PU-N**

CEP70 (Center) Rabbit Polyclonal Antibody

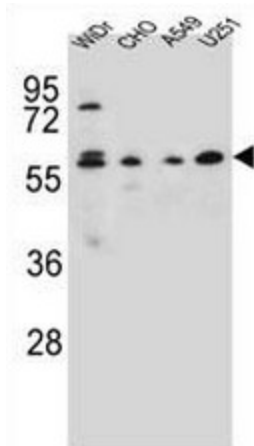
Product data:

Product Type:	Primary Antibodies
Applications:	FC, IHC, WB
Recommended Dilution:	ELISA: 1/1000. Western blot: 1/100 - 1/500. Immunohistochemistry on paraffin sections: 1/50 - 1/100. Flow Cytometry: 1/10 - 1/50.
Reactivity:	Hamster, Human
Host:	Rabbit
Isotype:	Ig
Clonality:	Polyclonal
Immunogen:	KLH conjugated synthetic peptide between 316-346 amino acids from the Central region of human CEP70
Specificity:	This antibody reacts to CEP70.
Formulation:	PBS State: Aff - Purified State: Liquid purified Ig fraction Preservative: 0.09% (W/V) sodium azide
Concentration:	lot specific
Purification:	Affinity chromatography on Protein A
Conjugation:	Unconjugated
Storage:	Store undiluted at 2-8°C for one month or (in aliquots) at -20°C for longer. Avoid repeated freezing and thawing.
Stability:	Shelf life: one year from despatch.
Predicted Protein Size:	69752 Da
Gene Name:	centrosomal protein 70
Database Link:	Entrez Gene 80321 Human Q8NHQ1
Synonyms:	Centrosomal protein of 70 kDa, BITE, p10-binding protein

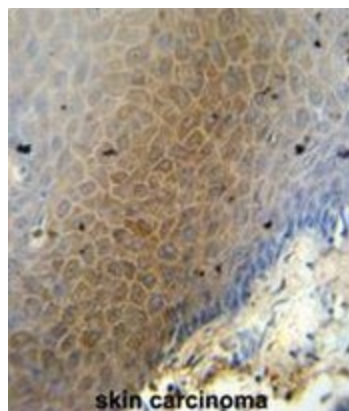


[View online »](#)

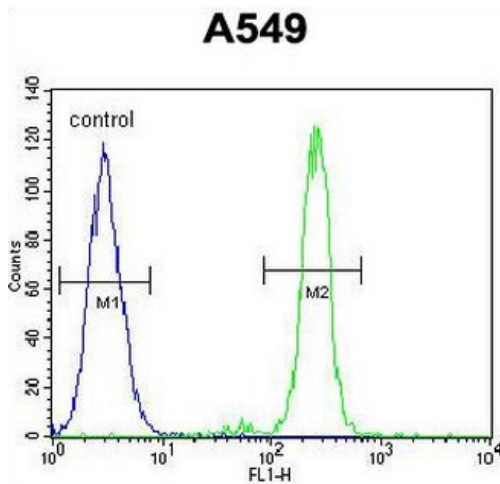
Product images:



CEP70 Antibody (Center) western blot analysis in WiDr, CHO, A549, U251 cell line lysates (35ug/lane). This demonstrates the CEP70 antibody detected the CEP70 protein (arrow).



CEP70 antibody (Center) immunohistochemistry analysis in formalin fixed and paraffin embedded human skin carcinoma followed by peroxidase conjugation of the secondary antibody and DAB staining. This data demonstrates the use of the CEP70 antibody (Center) for immunohistochemistry. Clinical relevance has not been evaluated.



CEP70 Antibody (Center) flow cytometric analysis of A549 cells (right histogram) compared to a negative control cell (left histogram). FITC-conjugated goat-anti-rabbit secondary antibodies were used for the analysis.