

Product datasheet for **AP50855PU-N**

CENPI (Center) Rabbit Polyclonal Antibody

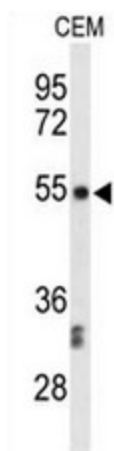
Product data:

Product Type:	Primary Antibodies
Applications:	WB
Recommended Dilution:	ELISA: 1/1000. Western blot: 1/100 - 1/500.
Reactivity:	Human
Host:	Rabbit
Isotype:	Ig
Clonality:	Polyclonal
Immunogen:	KLH conjugated synthetic peptide selected from the Central region of human CENPI
Specificity:	This antibody reacts to CENPI.
Formulation:	PBS State: Aff - Purified State: Liquid purified Ig fraction Preservative: 0.09% (W/V) sodium azide
Concentration:	lot specific
Purification:	Affinity chromatography on Protein A
Conjugation:	Unconjugated
Storage:	Store undiluted at 2-8°C for one month or (in aliquots) at -20°C for longer. Avoid repeated freezing and thawing.
Stability:	Shelf life: one year from despatch.
Predicted Protein Size:	86720 Da
Gene Name:	centromere protein I
Database Link:	Entrez Gene 2491 Human Q92674
Background:	CENPI is involved in the response of gonadal tissues to follicle-stimulating hormone.
Synonyms:	Centromere protein I, CENPI, FSHPRH1, ICEN19, LRPR1



[View online »](#)

Product images:



Western blot analysis of CENPI Antibody (Center) in CEM cell line lysates (35ug/lane). CENPI (arrow) was detected using the purified Pab.