

Product datasheet for **AP50851PU-N**

Bile salt activated lipase (CEL) (Center) Rabbit Polyclonal Antibody

Product data:

Product Type:	Primary Antibodies
Applications:	WB
Recommended Dilution:	ELISA: 1/1000. Western blot: 1/100 - 1/500.
Reactivity:	Human
Host:	Rabbit
Isotype:	Ig
Clonality:	Polyclonal
Immunogen:	KLH conjugated synthetic peptide between 453-482 amino acids from the Central region of human CEL
Specificity:	This antibody recognizes Human CEL. Other species not tested.
Formulation:	PBS State: Aff - Purified State: Liquid purified Ig fraction Preservative: 0.09% (W/V) sodium azide
Concentration:	lot specific
Purification:	Affinity chromatography on Protein A
Conjugation:	Unconjugated
Storage:	Store undiluted at 2-8°C for one month or (in aliquots) at -20°C for longer. Avoid repeated freezing and thawing.
Stability:	Shelf life: one year from despatch.
Predicted Protein Size:	79322 Da
Gene Name:	carboxyl ester lipase
Database Link:	Entrez Gene 1056 Human P19835



[View online »](#)

Background:

The protein encoded by this gene is a glycoprotein secreted from the pancreas into the digestive tract and from the lactating mammary gland into human milk. The physiological role of this protein is in cholesterol and lipid-soluble vitamin ester hydrolysis and absorption. This encoded protein promotes large chylomicron production in the intestine. Also its presence in plasma suggests its interactions with cholesterol and oxidized lipoproteins to modulate the progression of atherosclerosis. In pancreatic tumoral cells, this encoded protein is thought to be sequestered within the Golgi compartment and is probably not secreted. This gene contains a variable number of tandem repeat (VNTR) polymorphism in the coding region that may influence the function of the encoded protein.

Synonyms:

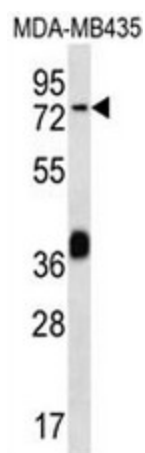
Bile salt-activated lipase, Carboxyl ester lipase, Sterol esterase, Cholesterol esterase, Pancreatic lysophospholipase, Bucelipase, FAP, BSDL, BSSL, CELL, FAPP, LIPA, CEase, MODY8

Protein Families:

Druggable Genome

Protein Pathways:

Glycerolipid metabolism, Metabolic pathways, Steroid biosynthesis

Product images:

CEL Antibody (Center) western blot analysis in MDA-MB435 cell line lysates (35ug/lane). This demonstrates the CEL antibody detected the CEL protein (arrow).