

Product datasheet for **AP50849PU-N**

CEBPD (N-term) Rabbit Polyclonal Antibody

Product data:

Product Type:	Primary Antibodies
Applications:	WB
Recommended Dilution:	ELISA: 1/1000. Western blot: 1/100 - 1/500.
Reactivity:	Human, Mouse
Host:	Rabbit
Isotype:	Ig
Clonality:	Polyclonal
Immunogen:	KLH conjugated synthetic peptide between 10-39 amino acids from the N-terminal region of human CEBPD
Specificity:	This antibody reacts to CEBPD.
Formulation:	PBS State: Aff - Purified State: Liquid purified Ig fraction Preservative: 0.09% (W/V) sodium azide
Concentration:	lot specific
Purification:	Affinity chromatography on Protein A
Conjugation:	Unconjugated
Storage:	Store undiluted at 2-8°C for one month or (in aliquots) at -20°C for longer. Avoid repeated freezing and thawing.
Stability:	Shelf life: one year from despatch.
Predicted Protein Size:	28467 Da
Gene Name:	CCAAT/enhancer binding protein delta
Database Link:	Entrez Gene 12609 Mouse Entrez Gene 1052 Human P49716



[View online »](#)

Background:

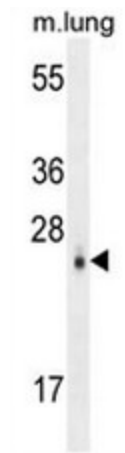
The protein encoded by this intronless gene is a bZIP transcription factor which can bind as a homodimer to certain DNA regulatory regions. It can also form heterodimers with the related protein CEBP-alpha. The encoded protein is important in the regulation of genes involved in immune and inflammatory responses, and may be involved in the regulation of genes associated with activation and/or differentiation of macrophages. The cytogenetic location of this locus has been reported as both 8p11 and 8q11.

Synonyms:

C/EBP delta, NF-IL6-beta

Protein Families:

Druggable Genome, Transcription Factors

Product images:

CEBPD Antibody (N-term) western blot analysis in mouse lung tissue lysates (35ug/lane). This demonstrates the CEBPD antibody detected the CEBPD protein (arrow).