

Product datasheet for **AP50847PU-N**

CEBP Alpha (CEBPA) (C-term) Rabbit Polyclonal Antibody

Product data:

Product Type:	Primary Antibodies
Applications:	FC, WB
Recommended Dilution:	ELISA: 1/1000. Western blot: 1/100 - 1/500. Flow Cytometry: 1/10 - 1/50.
Reactivity:	Human, Mouse
Host:	Rabbit
Isotype:	Ig
Clonality:	Polyclonal
Immunogen:	KLH conjugated synthetic peptide between 310~339 amino acids from the C-terminal region of human CEBPA
Specificity:	This antibody reacts to CEBPA.
Formulation:	PBS State: Aff - Purified State: Liquid purified Ig fraction Preservative: 0.09% (W/V) sodium azide
Concentration:	lot specific
Purification:	Affinity chromatography on Protein A
Conjugation:	Unconjugated
Storage:	Store undiluted at 2-8°C for one month or (in aliquots) at -20°C for longer. Avoid repeated freezing and thawing.
Stability:	Shelf life: one year from despatch.
Predicted Protein Size:	37561 Da
Gene Name:	CCAAT/enhancer binding protein alpha
Database Link:	Entrez Gene 12606 Mouse Entrez Gene 1050 Human P49715



[View online »](#)

Background:

CEBPA is a bZIP transcription factor which can bind as a homodimer to certain promoters and enhancers. It can also form heterodimers with the related proteins CEBP-beta and CEBP-gamma. This protein has been shown to bind to the promoter and modulate the expression of the gene encoding leptin, a protein that plays an important role in body weight homeostasis. Also, the protein can interact with CDK2 and CDK4, thereby inhibiting these kinases and causing growth arrest in cultured cells.

Synonyms:

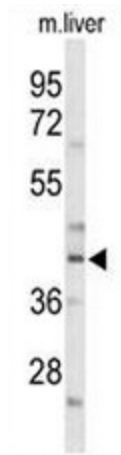
C/EBP alpha

Protein Families:

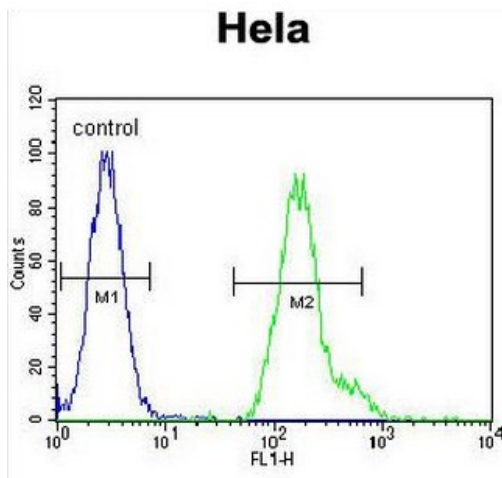
Druggable Genome, ES Cell Differentiation/IPS

Protein Pathways:

Acute myeloid leukemia, Pathways in cancer

Product images:


Western blot analysis of CEBPA Antibody (C-term) in mouse liver tissue lysates (35ug/lane). CEBPA (arrow) was detected using the purified Pab.



CEBPA Antibody (C-term) flow cytometric analysis of HeLa cells (right histogram) compared to a negative control cell (left histogram). FITC-conjugated goat-anti-rabbit secondary antibodies were used for the analysis.