

Product datasheet for **AP50844PU-N**

CEACAM18 (N-term) Rabbit Polyclonal Antibody

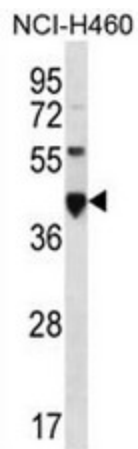
Product data:

Product Type:	Primary Antibodies
Applications:	WB
Recommended Dilution:	ELISA: 1/1000. Western blot: 1/100 - 1/500.
Reactivity:	Human
Host:	Rabbit
Isotype:	Ig
Clonality:	Polyclonal
Immunogen:	KLH conjugated synthetic peptide between 31-60 amino acids from the N-terminal region of human CEACAM18
Specificity:	This antibody reacts to CEACAM18.
Formulation:	PBS State: Aff - Purified State: Liquid purified Ig fraction Preservative: 0.09% (W/V) sodium azide
Concentration:	lot specific
Purification:	Affinity chromatography on Protein A
Conjugation:	Unconjugated
Storage:	Store undiluted at 2-8°C for one month or (in aliquots) at -20°C for longer. Avoid repeated freezing and thawing.
Stability:	Shelf life: one year from despatch.
Predicted Protein Size:	40541 Da
Gene Name:	carcinoembryonic antigen related cell adhesion molecule 18
Database Link:	Entrez Gene 729767 Human A8MTB9
Synonyms:	Carcinoembryonic antigen-related cell adhesion molecule 18



[View online »](#)

Product images:



CEACAM18 Antibody (N-term) western blot analysis in NCI-H460 cell line lysates (35ug/lane). This demonstrates the CEACAM18 antibody detected the CEACAM18 protein (arrow).