

## Product datasheet for **AP50842PU-N**

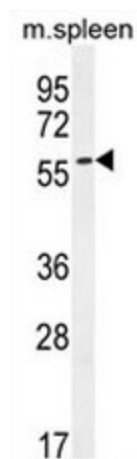
### POC5 (C-term) Rabbit Polyclonal Antibody

#### Product data:

Product Type:	Primary Antibodies
Applications:	WB
Recommended Dilution:	<b>ELISA:</b> 1/1000. <b>Western blot:</b> 1/100 - 1/500.
Reactivity:	Human, Mouse
Host:	Rabbit
Isotype:	Ig
Clonality:	Polyclonal
Immunogen:	KLH conjugated synthetic peptide between 371-401 amino acids from the C-terminal region of human CE037
Specificity:	This antibody reacts to CE037.
Formulation:	PBS State: Aff - Purified State: Liquid purified Ig fraction Preservative: 0.09% (W/V) sodium azide
Concentration:	lot specific
Purification:	Affinity chromatography on Protein A
Conjugation:	Unconjugated
Storage:	Store undiluted at 2-8°C for one month or (in aliquots) at -20°C for longer. Avoid repeated freezing and thawing.
Stability:	Shelf life: one year from despatch.
Predicted Protein Size:	63351 Da
Gene Name:	Homo sapiens POC5 centriolar protein (POC5), transcript variant 1
Database Link:	<a href="#">Entrez Gene 134359 Human Q8NA72</a>
Background:	Essential for the assembly of the distal half of centrioles, required for centriole elongation.
Synonyms:	C5orf37, Protein of centriole 5, hPOC5



[View online »](#)

**Product images:**

CE037 Antibody (C-term) western blot analysis in mouse spleen tissue lysates (35ug/lane). This demonstrates the CE037 antibody detected the CE037 protein (arrow).