

Product datasheet for **AP50836PU-N**

CD109 (N-term) Rabbit Polyclonal Antibody

Product data:

Product Type:	Primary Antibodies
Applications:	WB
Recommended Dilution:	ELISA: 1/1000. Western blot: 1/100 - 1/500.
Reactivity:	Human, Mouse
Host:	Rabbit
Isotype:	Ig
Clonality:	Polyclonal
Immunogen:	KLH conjugated synthetic peptide between 77-109 amino acids from the N-terminal region of human CD109
Specificity:	This antibody reacts to CD109.
Formulation:	PBS State: Aff - Purified State: Liquid purified Ig fraction Preservative: 0.09% (W/V) sodium azide
Concentration:	lot specific
Purification:	Affinity chromatography on Protein A
Conjugation:	Unconjugated
Storage:	Store undiluted at 2-8°C for one month or (in aliquots) at -20°C for longer. Avoid repeated freezing and thawing.
Stability:	Shelf life: one year from despatch.
Predicted Protein Size:	161689 Da
Gene Name:	CD109 molecule
Database Link:	Entrez Gene 135228 Human Q6YHK3

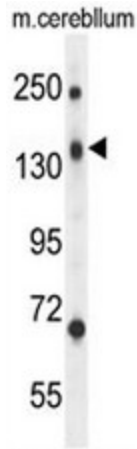


[View online »](#)

Background: CD109 is a member of the alpha2-macroglobulin/complement superfamily. The encoded GPI-linked glycoprotein is found on the cell surface of platelets, activated T-cells, and endothelial cells. The protein binds to and negatively regulates signaling of transforming growth factor beta (TGF-beta).

Synonyms: p180, r150

Product images:



CD109 Antibody (N-term) western blot analysis in mouse cerebellum tissue lysates (35ug/lane). This demonstrates the CD109 antibody detected the CD109 protein (arrow).