

Product datasheet for **AP50835PU-N**

VCAM1 (Center) Rabbit Polyclonal Antibody

Product data:

Product Type:	Primary Antibodies
Applications:	WB
Recommended Dilution:	ELISA: 1/1000. Western blot: 1/50 - 1/100.
Reactivity:	Human, Mouse
Host:	Rabbit
Isotype:	Ig
Clonality:	Polyclonal
Immunogen:	KLH conjugated synthetic peptide between 294-322 amino acids from the Central region of human CD106
Specificity:	This antibody reacts to CD106.
Formulation:	PBS State: Purified State: Liquid purified Ig fraction Preservative: 0.09% (W/V) sodium azide
Concentration:	lot specific
Purification:	Saturated Ammonium Sulfate (SAS) precipitation
Conjugation:	Unconjugated
Storage:	Store undiluted at 2-8°C for one month or (in aliquots) at -20°C for longer. Avoid repeated freezing and thawing.
Stability:	Shelf life: one year from despatch.
Predicted Protein Size:	81276 Da
Gene Name:	vascular cell adhesion molecule 1
Database Link:	<u>Entrez Gene 22329 Mouse</u> <u>Entrez Gene 7412 Human</u> <u>P19320</u>



[View online »](#)

Background:

This gene is a member of the Ig superfamily and encodes a cell surface sialoglycoprotein expressed by cytokine-activated endothelium. This type I membrane protein mediates leukocyte-endothelial cell adhesion and signal transduction, and may play a role in the development of atherosclerosis and rheumatoid arthritis. Two alternatively spliced transcripts encoding different isoforms have been described for this gene.

Synonyms:

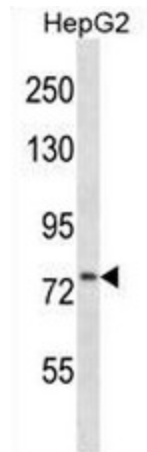
V-CAM 1, INCAM-100, L1CAM, VCAM-1

Protein Families:

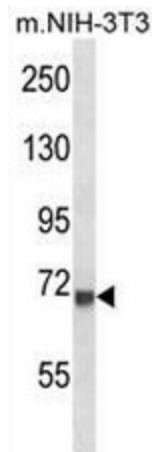
Druggable Genome, ES Cell Differentiation/IPS, Transmembrane

Protein Pathways:

Cell adhesion molecules (CAMs), Leukocyte transendothelial migration

Product images:


CD106 Antibody (Center) western blot analysis in HepG2 cell line lysates (35ug/lane). This demonstrates the CD106 antibody detected the CD106 protein (arrow).



CD106 Antibody (Center) western blot analysis in mouse NIH-3T3 cell line lysates (35ug/lane). This demonstrates the CD106 antibody detected the CD106 protein (arrow).