

Product datasheet for **AP50830PU-N**

TCP1 theta (CCT8) (C-term) Rabbit Polyclonal Antibody

Product data:

Product Type:	Primary Antibodies
Applications:	IHC, WB
Recommended Dilution:	ELISA: 1/1000. Western blot: 1/100 - 1/500. Immunohistochemistry on paraffin sections: 1/10 - 1/50.
Reactivity:	Human
Host:	Rabbit
Isotype:	Ig
Clonality:	Polyclonal
Immunogen:	KLH conjugated synthetic peptide between 518-548 amino acids from the C-terminal region of human CCT8
Specificity:	This antibody reacts to CCT8.
Formulation:	PBS State: Aff - Purified State: Liquid purified Ig fraction Preservative: 0.09% (W/V) sodium azide
Concentration:	lot specific
Purification:	Affinity chromatography on Protein A
Conjugation:	Unconjugated
Storage:	Store undiluted at 2-8°C for one month or (in aliquots) at -20°C for longer. Avoid repeated freezing and thawing.
Stability:	Shelf life: one year from despatch.
Predicted Protein Size:	59621 Da
Gene Name:	chaperonin containing TCP1 subunit 8
Database Link:	Entrez Gene 10694 Human P50990



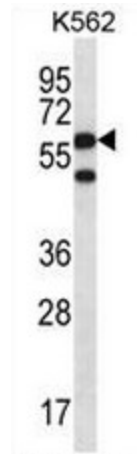
[View online »](#)

Background: Molecular chaperone; CCT8 assists the folding of proteins upon ATP hydrolysis. As part of the BBS/CCT complex may play a role in the assembly of BBSome, a complex involved in ciliogenesis regulating transports vesicles to the cilia. Known to play a role, in vitro, in the folding of actin and tubulin.

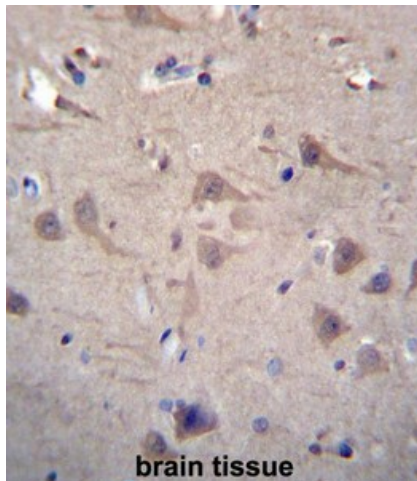
Synonyms: CCTQ, CCT theta, KIAA0002, NY-REN-15

Protein Families: Druggable Genome

Product images:



CCT8 Antibody (C-term) western blot analysis in K562 cell line lysates (35ug/lane). This demonstrates the CCT8 antibody detected the CCT8 protein (arrow).



CCT8 Antibody (C-term) immunohistochemistry analysis in formalin fixed and paraffin embedded human brain tissue followed by peroxidase conjugation of the secondary antibody and DAB staining. This data demonstrates the use of CCT8 Antibody (C-term) for immunohistochemistry. Clinical relevance has not been evaluated.