

Product datasheet for **AP50829PU-N**

TCP1 delta (CCT4) (N-term) Rabbit Polyclonal Antibody

Product data:

Product Type:	Primary Antibodies
Applications:	WB
Recommended Dilution:	ELISA: 1/1000. Western blot: 1/100 - 1/500.
Reactivity:	Human
Host:	Rabbit
Isotype:	Ig
Clonality:	Polyclonal
Immunogen:	KLH conjugated synthetic peptide between 3-32 amino acids from the N-terminal region of human CCT4
Specificity:	This antibody reacts to CCT4.
Formulation:	PBS State: Aff - Purified State: Liquid purified Ig fraction Preservative: 0.09% (W/V) sodium azide
Concentration:	lot specific
Purification:	Affinity chromatography on Protein A
Conjugation:	Unconjugated
Storage:	Store undiluted at 2-8°C for one month or (in aliquots) at -20°C for longer. Avoid repeated freezing and thawing.
Stability:	Shelf life: one year from despatch.
Predicted Protein Size:	57924 Da
Gene Name:	chaperonin containing TCP1 subunit 4
Database Link:	Entrez Gene 10575 Human P50991



[View online »](#)

Background:

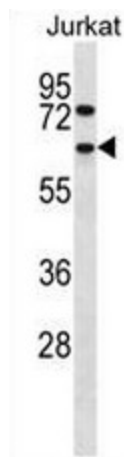
The chaperonin containing TCP1 (MIM 186980) complex (CCT), also called the TCP1 ring complex, consists of 2 back-to-back rings, each containing 8 unique but homologous subunits, such as CCT4. CCT assists the folding of newly translated polypeptide substrates through multiple rounds of ATP-driven release and rebinding of partially folded intermediate forms. Substrates of CCT include the cytoskeletal proteins actin (see MIM 102560) and tubulin (see MIM 191130), as well as alpha-transducin (MIM 139330) (Won et al., 1998 [PubMed 9819444]).

Synonyms:

CCTD, CCT delta, SRB

Protein Families:

Druggable Genome

Product images:

CCT4 Antibody (N-term) western blot analysis in Jurkat cell line lysates (35ug/lane). This demonstrates the CCT4 antibody detected the CCT4 protein (arrow).