

Product datasheet for **AP50828PU-N**

CCRL2 (Center) Rabbit Polyclonal Antibody

Product data:

Product Type:	Primary Antibodies
Applications:	WB
Recommended Dilution:	ELISA: 1/1000. Western blot: 1/100 - 1/500.
Reactivity:	Human
Host:	Rabbit
Isotype:	Ig
Clonality:	Polyclonal
Immunogen:	KLH conjugated synthetic peptide between 205-234 amino acids from the Central region of human CCRL2
Specificity:	This antibody reacts to CCRL2.
Formulation:	PBS State: Aff - Purified State: Liquid purified Ig fraction Preservative: 0.09% (W/V) sodium azide
Concentration:	lot specific
Purification:	Affinity chromatography on Protein A
Conjugation:	Unconjugated
Storage:	Store undiluted at 2-8°C for one month or (in aliquots) at -20°C for longer. Avoid repeated freezing and thawing.
Stability:	Shelf life: one year from despatch.
Predicted Protein Size:	39513 Da
Gene Name:	Homo sapiens chemokine (C-C motif) receptor-like 2 (CCRL2), transcript variant 2
Database Link:	Entrez Gene 9034 Human O00421



[View online »](#)

Background:

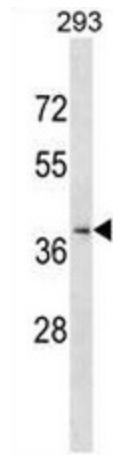
This gene encodes a chemokine receptor like protein, which is predicted to be a seven transmembrane protein and most closely related to CCR1. Chemokines and their receptors mediated signal transduction are critical for the recruitment of effector immune cells to the site of inflammation. This gene is expressed at high levels in primary neutrophils and primary monocytes, and is further upregulated on neutrophil activation and during monocyte to macrophage differentiation. The function of this gene is unknown. This gene is mapped to the region where the chemokine receptor gene cluster is located.

Synonyms:

Chemokine receptor X, CKRX, CRAM, HCR

Protein Families:

Druggable Genome, GPCR, Transmembrane

Product images:

CCRL2 Antibody (Center) (Cat. #AP50828PU-N) western blot analysis in 293 cell line lysates (35ug/lane). This demonstrates the CCRL2 antibody detected the CCRL2 protein (arrow).