

Product datasheet for **AP50827PU-N**

CCR8 (C-term) Rabbit Polyclonal Antibody

Product data:

| | |
|-------------------------|--|
| Product Type: | Primary Antibodies |
| Applications: | FC, WB |
| Recommended Dilution: | ELISA: 1/1000. Western blot: 1/100 - 1/500. Flow Cytometry: 1/10 - 1/50. |
| Reactivity: | Human |
| Host: | Rabbit |
| Isotype: | Ig |
| Clonality: | Polyclonal |
| Immunogen: | KLH conjugated synthetic peptide between 297-325 amino acids from the C-terminal region of human CCR8 |
| Specificity: | This antibody reacts to CCR8. |
| Formulation: | PBS State: Aff - Purified State: Liquid purified Ig fraction Preservative: 0.09% (W/V) sodium azide |
| Concentration: | lot specific |
| Purification: | Affinity chromatography on Protein A |
| Conjugation: | Unconjugated |
| Storage: | Store undiluted at 2-8°C for one month or (in aliquots) at -20°C for longer. Avoid repeated freezing and thawing. |
| Stability: | Shelf life: one year from despatch. |
| Predicted Protein Size: | 40844 Da |
| Gene Name: | C-C motif chemokine receptor 8 |
| Database Link: | Entrez Gene 1237 Human P51685 |



[View online »](#)

Background:

CCR8 encodes a member of the beta chemokine receptor family, which is predicted to be a seven transmembrane protein similar to G protein-coupled receptors. Chemokines and their receptors are important for the migration of various cell types into the inflammatory sites. This receptor protein preferentially expresses in the thymus. I-309, thymus activation-regulated cytokine (TARC) and macrophage inflammatory protein-1 beta (MIP-1 beta) have been identified as ligands of this receptor. Studies of this receptor and its ligands suggested its role in regulation of monocyte chemotaxis and thymic cell apoptosis. More specifically, this receptor may contribute to the proper positioning of activated T cells within the antigenic challenge sites and specialized areas of lymphoid tissues. CCR8 is located at the chemokine receptor gene cluster region.

Synonyms:

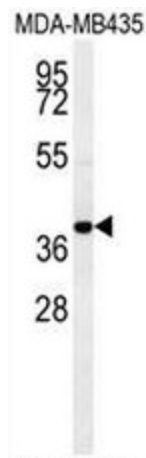
C-C chemokine receptor type 8, C-C CKR-8, CC-CKR-8, CCR-8, GPR-CY6, Chemokine receptor-like 1, TER1, CMKBRL2, CC-chemokine receptor CHEMR1, CKRL1, CMKBR8, CMKBRL2

Protein Families:

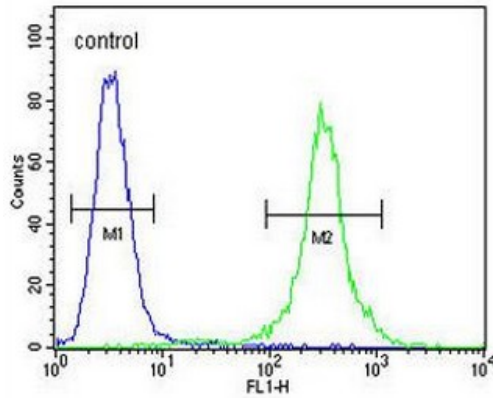
Druggable Genome, GPCR, Transmembrane

Protein Pathways:

Chemokine signaling pathway, Cytokine-cytokine receptor interaction

Product images:

CCR8 Antibody (C-term) western blot analysis in MDA-MB435 cell line lysates (35ug/lane). This demonstrates the CCR8 antibody detected the CCR8 protein (arrow).

MDA-MB435

CCR8 Antibody (C-term) flow cytometric analysis of MDA-MB435 cells (right histogram) compared to a negative control cell (left histogram). FITC-conjugated goat-anti-rabbit secondary antibodies were used for the analysis.