

## Product datasheet for **AP50823PU-N**

### Cyclin Y (CCNY) (Center) Rabbit Polyclonal Antibody

#### Product data:

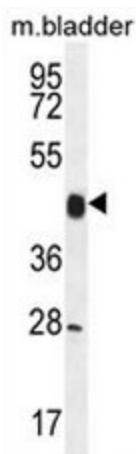
Product Type:	Primary Antibodies
Applications:	WB
Recommended Dilution:	<b>ELISA:</b> 1/1000. <b>Western blot:</b> 1/100 - 1/500.
Reactivity:	Human, Mouse
Host:	Rabbit
Isotype:	Ig
Clonality:	Polyclonal
Immunogen:	KLH conjugated synthetic peptide between 147-177 amino acids from the Central region of human CCNY
Specificity:	This antibody reacts to CCNY.
Formulation:	PBS State: Aff - Purified State: Liquid purified Ig fraction Preservative: 0.09% (W/V) sodium azide.
Concentration:	lot specific
Purification:	Affinity chromatography on Protein A
Conjugation:	Unconjugated
Storage:	Store undiluted at 2-8°C for one month or (in aliquots) at -20°C for longer. Avoid repeated freezing and thawing.
Stability:	Shelf life: one year from despatch.
Predicted Protein Size:	39337 Da
Gene Name:	cyclin Y
Database Link:	<a href="#">Entrez Gene 67974 Mouse</a> <a href="#">Entrez Gene 219771 Human</a> <a href="#">Q8ND76</a>
Background:	Cyclins, such as CCNY, control cell division cycles and regulate cyclin-dependent kinases (e.g., CDC2; MIM 116940) (Li et al., 2009 [PubMed 18060517]).



[View online »](#)

Synonyms: Cyclin-Y, C10orf9, CBCP1, CFP1, Cyclin fold protein 1, Cyclin box protein 1

**Product images:**



CCNY Antibody (Center) western blot analysis in mouse bladder tissue lysates (35ug/lane). This demonstrates the CCNY antibody detected the CCNY protein (arrow).