

## Product datasheet for **AP50821PU-N**

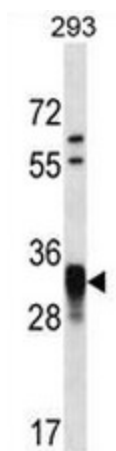
### CCNO (N-term) Rabbit Polyclonal Antibody

#### Product data:

|                         |  |
|-------------------------|--|
| Product Type:           | Primary Antibodies   |
| Applications:           | WB   |
| Recommended Dilution:   | <b>ELISA:</b> 1/1000.<br><b>Western blot:</b> 1/100 - 1/500.   |
| Reactivity:             | Human  |
| Host:                   | Rabbit   |
| Isotype:                | Ig   |
| Clonality:              | Polyclonal   |
| Immunogen:              | KLH conjugated synthetic peptide between 1-30 amino acids from the N-terminal region of human CCNO                   |
| Specificity:            | This antibody reacts to CCNO.  |
| Formulation:            | PBS<br>State: Aff - Purified<br>State: Liquid purified Ig fraction<br>Preservative: 0.09% (W/V) sodium azide         |
| Concentration:          | lot specific   |
| Purification:           | Affinity chromatography on Protein A   |
| Conjugation:            | Unconjugated   |
| Storage:                | Store undiluted at 2-8°C for one month or (in aliquots) at -20°C for longer.<br>Avoid repeated freezing and thawing. |
| Stability:              | Shelf life: one year from despatch.  |
| Predicted Protein Size: | 38096 Da   |
| Gene Name:              | cyclin O   |
| Database Link:          | <a href="#">Entrez Gene 10309 Human P22674</a>   |
| Synonyms:               | UDG2, UNG2, CCNO   |



[View online »](#)

**Product images:**

CCNO Antibody (N-term) western blot analysis in 293 cell line lysates (35ug/lane). This demonstrates the CCNO antibody detected the CCNO protein (arrow).