

Product datasheet for **AP50820PU-N**

CCNL2 (Center) Rabbit Polyclonal Antibody

Product data:

Product Type:	Primary Antibodies
Applications:	WB
Recommended Dilution:	ELISA: 1/1000. Western blot: 1/100 - 1/500.
Reactivity:	Human
Host:	Rabbit
Isotype:	Ig
Clonality:	Polyclonal
Immunogen:	KLH conjugated synthetic peptide between 345-374 amino acids from the Central region of human CCNL2
Specificity:	This antibody reacts to CCNL2.
Formulation:	PBS State: Aff - Purified State: Liquid purified Ig fraction Preservative: 0.09% (W/V) sodium azide
Concentration:	lot specific
Purification:	Affinity chromatography on Protein A
Conjugation:	Unconjugated
Storage:	Store undiluted at 2-8°C for one month or (in aliquots) at -20°C for longer. Avoid repeated freezing and thawing.
Stability:	Shelf life: one year from despatch.
Predicted Protein Size:	58147 Da
Gene Name:	cyclin L2
Database Link:	Entrez Gene 81669 Human Q96S94
Background:	CCNL2 is a transcriptional regulator which participates in regulating the pre-mRNA splicing process. Also modulates the expression of critical apoptotic factor, leading to cell apoptosis.

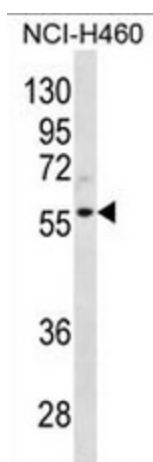


[View online »](#)

Synonyms: Cyclin-L2, CCNL2, SB138

Protein Families: Druggable Genome

Product images:



CCNL2 Antibody (Center) western blot analysis in NCI-H460 cell line lysates (35ug/lane). This demonstrates the CCNL2 antibody detected the CCNL2 protein (arrow).