

Product datasheet for **AP50819PU-N**

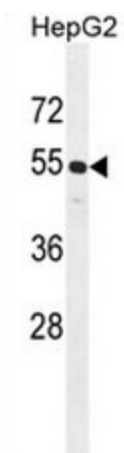
CCNJL (Center) Rabbit Polyclonal Antibody

Product data:

Product Type:	Primary Antibodies
Applications:	WB
Recommended Dilution:	ELISA: 1/1000. Western blot: 1/100 - 1/500.
Reactivity:	Human
Host:	Rabbit
Isotype:	Ig
Clonality:	Polyclonal
Immunogen:	KLH conjugated synthetic peptide between 132-161 amino acids from the Central region of human CCNJL
Specificity:	KLH conjugated synthetic peptide between 132-161 amino acids from the Central region of human CCNJL
Formulation:	PBS State: Aff - Purified State: Liquid purified Ig fraction Preservative: 0.09% (W/V) sodium azide
Concentration:	lot specific
Purification:	Affinity chromatography on Protein A
Conjugation:	Unconjugated
Storage:	Store undiluted at 2-8°C for one month or (in aliquots) at -20°C for longer. Avoid repeated freezing and thawing.
Stability:	Shelf life: one year from despatch.
Predicted Protein Size:	48406 Da
Gene Name:	cyclin J like
Database Link:	Entrez Gene 79616 Human Q8IV13
Synonyms:	CCNJL, FLJ14166



[View online »](#)

Product images:

CCNJL Antibody (Center) western blot analysis in HepG2 cell line lysates (35ug/lane). This demonstrates the CCNJL antibody detected the CCNJL protein (arrow).