

Product datasheet for **AP50814PU-N**

Cyclin G2 (CCNG2) (Center) Rabbit Polyclonal Antibody

Product data:

Product Type:	Primary Antibodies
Applications:	WB
Recommended Dilution:	ELISA: 1/1000. Western blot: 1/1000
Reactivity:	Human
Host:	Rabbit
Isotype:	Ig
Clonality:	Polyclonal
Immunogen:	KLH conjugated synthetic peptide between 214-243 amino acids from the Central region of human CCNG2
Specificity:	This antibody reacts to CCNG2.
Formulation:	PBS State: Aff - Purified State: Liquid purified Ig fraction Preservative: 0.09% (W/V) sodium azide
Concentration:	lot specific
Purification:	Affinity chromatography on Protein A
Conjugation:	Unconjugated
Storage:	Store undiluted at 2-8°C for one month or (in aliquots) at -20°C for longer. Avoid repeated freezing and thawing.
Stability:	Shelf life: one year from despatch.
Predicted Protein Size:	38866 Da
Gene Name:	cyclin G2
Database Link:	Entrez Gene 901 Human Q16589



[View online »](#)

Background:

The eukaryotic cell cycle is governed by cyclin-dependent protein kinases (CDKs) whose activities are regulated by cyclins and CDK inhibitors. The 8 species of cyclins reported in mammals, cyclins A through H, share a conserved amino acid sequence of about 90 residues called the cyclin box. The amino acid sequence of cyclin G is well conserved among mammals. The nucleotide sequence of cyclin G1 and cyclin G2 are 53% identical. Unlike cyclin G1, cyclin G2 contains a C-terminal PEST protein destabilization motif, suggesting that cyclin G2 expression is tightly regulated through the cell cycle.

Synonyms:

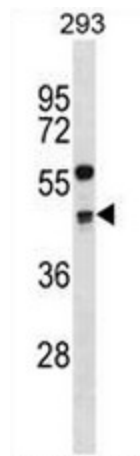
Cyclin-G2, CCNG2

Protein Families:

Druggable Genome

Protein Pathways:

p53 signaling pathway

Product images:

CCNG2 Antibody (Center) western blot analysis in 293 cell line lysates (35ug/lane). This demonstrates the CCNG2 antibody detected the CCNG2 protein (arrow).