

Product datasheet for **AP50812PU-N**

Cyclin G (CCNG1) (N-term) Rabbit Polyclonal Antibody

Product data:

| | |
|-------------------------|--|
| Product Type: | Primary Antibodies |
| Applications: | FC, WB |
| Recommended Dilution: | ELISA: 1/1000. Western blot: 1/100 - 1/500. Flow Cytometry: 1/10 - 1/50. |
| Reactivity: | Human |
| Host: | Rabbit |
| Isotype: | Ig |
| Clonality: | Polyclonal |
| Immunogen: | KLH conjugated synthetic peptide between 20-53 amino acids from the N-terminal region of human CCNG1 |
| Specificity: | This antibody reacts to CCNG1. |
| Formulation: | PBS State: Aff - Purified State: Liquid purified Ig fraction Preservative: 0.09% (W/V) sodium azide |
| Concentration: | lot specific |
| Purification: | Affinity chromatography on Protein A |
| Conjugation: | Unconjugated |
| Storage: | Store undiluted at 2-8°C for one month or (in aliquots) at -20°C for longer. Avoid repeated freezing and thawing. |
| Stability: | Shelf life: one year from despatch. |
| Predicted Protein Size: | 34074 Da |
| Gene Name: | cyclin G1 |
| Database Link: | Entrez Gene 900 Human P51959 |



[View online »](#)

Background:

The eukaryotic cell cycle is governed by cyclin-dependent protein kinases (CDKs) whose activities are regulated by cyclins and CDK inhibitors. The protein encoded by this gene is a member of the cyclin family and contains the cyclin box. The encoded protein lacks the protein destabilizing (PEST) sequence that is present in other family members. Transcriptional activation of this gene can be induced by tumor protein p53. Two transcript variants encoding the same protein have been identified for this gene. [provided by RefSeq].

Synonyms:

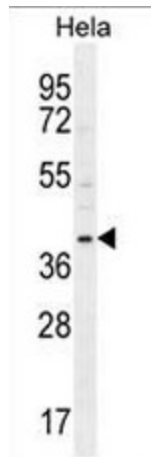
Cyclin-G1, Cyclin-G, CCNG1, CCNG, CYCG1

Protein Families:

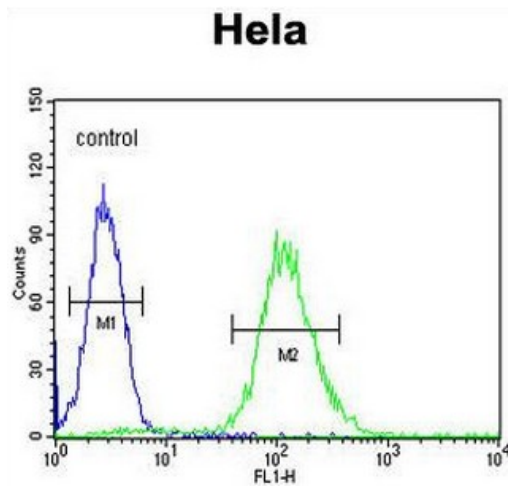
Druggable Genome

Protein Pathways:

p53 signaling pathway

Product images:


CCNG1 Antibody (N-term) western blot analysis in HeLa cell line lysates (35ug/lane). This demonstrates the CCNG1 antibody detected the CCNG1 protein (arrow).



CCNG1 Antibody (N-term) flow cytometric analysis of HeLa cells (right histogram) compared to a negative control cell (left histogram). FITC-conjugated goat-anti-rabbit secondary antibodies were used for the analysis.