

Product datasheet for **AP50806PU-N**

Cyclin B1 (CCNB1) (Center) Rabbit Polyclonal Antibody

Product data:

Product Type:	Primary Antibodies
Applications:	IHC, WB
Recommended Dilution:	ELISA: 1/1000. Western blot: 1/50 - 1/100. Immunohistochemistry on paraffin sections: 1/50 - 1/100.
Reactivity:	Human
Host:	Rabbit
Isotype:	Ig
Clonality:	Polyclonal
Immunogen:	KLH conjugated synthetic peptide between 248-275 amino acids from the Central region of human CCNB1
Specificity:	This antibody reacts to CCNB1.
Formulation:	PBS State: Purified State: Liquid purified Ig fraction Preservative: 0.09% (W/V) sodium azide
Concentration:	lot specific
Purification:	Saturated Ammonium Sulfate (SAS) precipitation
Conjugation:	Unconjugated
Storage:	Store undiluted at 2-8°C for one month or (in aliquots) at -20°C for longer. Avoid repeated freezing and thawing.
Stability:	Shelf life: one year from despatch.
Predicted Protein Size:	48337 Da
Gene Name:	cyclin B1
Database Link:	Entrez Gene 891 Human P14635



[View online »](#)

Background:

The protein encoded by this gene is a regulatory protein involved in mitosis. The gene product complexes with p34(cdc2) to form the maturation-promoting factor (MPF). Two alternative transcripts have been found, a constitutively expressed transcript and a cell cycle-regulated transcript, that is expressed predominantly during G2/M phase. The different transcripts result from the use of alternate transcription initiation sites. [provided by RefSeq].

Synonyms:

CCNB1, CCNB, Cyclin-B1

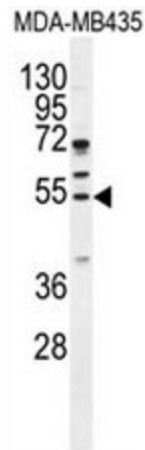
Protein Families:

Druggable Genome, Stem cell - Pluripotency

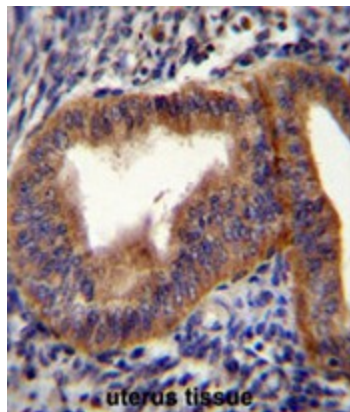
Protein Pathways:

Cell cycle, Oocyte meiosis, p53 signaling pathway, Progesterone-mediated oocyte maturation

Product images:



CCNB1 Antibody (Center) western blot analysis in MDA-MB435 cell line lysates (35ug/lane). This demonstrates the CCNB1 antibody detected the CCNB1 protein (arrow).



CCNB1 Antibody (Center) immunohistochemistry analysis in formalin fixed and paraffin embedded human uterus tissue followed by peroxidase conjugation of the secondary antibody and DAB staining. This data demonstrates the use of CCNB1 Antibody (Center) for immunohistochemistry. Clinical relevance has not been evaluated.