

Product datasheet for **AP50805PU-N**

MCP3 (CCL7) (Center) Rabbit Polyclonal Antibody

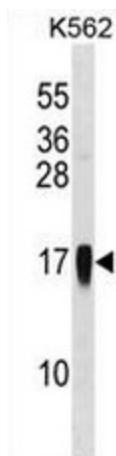
Product data:

Product Type:	Primary Antibodies
Applications:	WB
Recommended Dilution:	ELISA: 1/1000. Western blot: 1/100 - 1/500.
Reactivity:	Human
Host:	Rabbit
Isotype:	Ig
Clonality:	Polyclonal
Immunogen:	KLH conjugated synthetic peptide between 24-54 amino acids from the Central region of human CCL7
Specificity:	This antibody reacts to CCL7.
Formulation:	PBS State: Aff - Purified State: Liquid purified Ig fraction Preservative: 0.09% (W/V) sodium azide
Concentration:	lot specific
Purification:	Affinity chromatography on Protein A
Conjugation:	Unconjugated
Storage:	Store undiluted at 2-8°C for one month or (in aliquots) at -20°C for longer. Avoid repeated freezing and thawing.
Stability:	Shelf life: one year from despatch.
Predicted Protein Size:	11200 Da
Gene Name:	C-C motif chemokine ligand 7
Database Link:	Entrez Gene 6354 Human P80098



[View online »](#)

Background:	This gene encodes monocyte chemotactic protein 3, a secreted chemokine which attracts macrophages during inflammation and metastasis. It is a member of the C-C subfamily of chemokines which are characterized by having two adjacent cysteine residues. The protein is an in vivo substrate of matrix metalloproteinase 2, an enzyme which degrades components of the extracellular matrix. This gene is part of a cluster of C-C chemokine family members on chromosome 17q.
Synonyms:	Small-inducible cytokine A7, CCL-7, MCP-3, C-C motif chemokine 7, SCYA6, SCYA7, NC28
Protein Families:	Druggable Genome, Secreted Protein
Protein Pathways:	Chemokine signaling pathway, Cytokine-cytokine receptor interaction, NOD-like receptor signaling pathway

Product images:

CCL7 Antibody (Center) western blot analysis in K562 cell line lysates (35ug/lane). This demonstrates the CCL7 antibody detected the CCL7 protein (arrow).