

## Product datasheet for **AP50799PU-N**

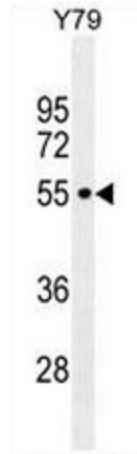
### CCDC97 (C-term) Rabbit Polyclonal Antibody

#### Product data:

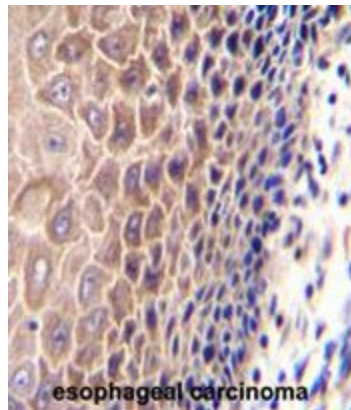
Product Type:	Primary Antibodies
Applications:	IHC, WB
Recommended Dilution:	<b>ELISA:</b> 1/1000. <b>Western blot:</b> 1/100 - 1/500. <b>Immunohistochemistry on paraffin sections:</b> 1/10 - 1/50.
Reactivity:	Human
Host:	Rabbit
Isotype:	Ig
Clonality:	Polyclonal
Immunogen:	KLH conjugated synthetic peptide between 248-277 amino acids from the C-terminal region of human CCDC97
Specificity:	This antibody reacts to CCDC97.
Formulation:	PBS State: Aff - Purified State: Liquid purified Ig fraction Preservative: 0.09% (W/V) sodium azide
Concentration:	lot specific
Purification:	Affinity chromatography on Protein A
Conjugation:	Unconjugated
Storage:	Store undiluted at 2-8°C for one month or (in aliquots) at -20°C for longer. Avoid repeated freezing and thawing.
Stability:	Shelf life: one year from despatch.
Predicted Protein Size:	38947 Da
Gene Name:	coiled-coil domain containing 97
Database Link:	<a href="#">Entrez Gene 90324 Human</a> <a href="#">Q96F63</a>
Synonyms:	FLJ40267; MGC20255



[View online »](#)

**Product images:**

CCDC97 Antibody (C-term) western blot analysis in Y79 cell line lysates (35ug/lane). This demonstrates the CCDC97 antibody detected the CCDC97 protein (arrow).



CCDC97 Antibody (C-term) immunohistochemistry analysis in formalin fixed and paraffin embedded human esophageal carcinoma followed by peroxidase conjugation of the secondary antibody and DAB staining. This data demonstrates the use of CCDC97 Antibody (C-term) for immunohistochemistry. Clinical relevance has not been evaluated.