

## Product datasheet for **AP50797PU-N**

### CCDC90B (Center) Rabbit Polyclonal Antibody

#### Product data:

Product Type:	Primary Antibodies
Applications:	IHC, WB
Recommended Dilution:	<b>ELISA:</b> 1/1000. <b>Western blot:</b> 1/100 - 1/500. <b>Immunohistochemistry on paraffin sections:</b> 1/10 - 1/50.
Reactivity:	Human
Host:	Rabbit
Isotype:	Ig
Clonality:	Polyclonal
Immunogen:	KLH conjugated synthetic peptide between 122-152 amino acids from the Central region of human CCDC90B
Specificity:	This antibody reacts to CCDC90B.
Formulation:	PBS State: Aff - Purified State: Liquid purified Ig fraction Preservative: 0.09% (W/V) sodium azide
Concentration:	lot specific
Purification:	Affinity chromatography on Protein A
Conjugation:	Unconjugated
Storage:	Store undiluted at 2-8°C for one month or (in aliquots) at -20°C for longer. Avoid repeated freezing and thawing.
Stability:	Shelf life: one year from despatch.
Predicted Protein Size:	29506 Da
Gene Name:	coiled-coil domain containing 90B
Database Link:	<a href="#">Entrez Gene 60492 Human</a> <a href="#">Q9GZT6</a>



[View online »](#)

**Background:**

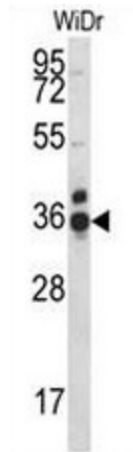
Coiled-coil domain containing 90B (CCDC90B) protein has seven predicted alpha helices, a characteristic of coiled-coil proteins. CCDC90B is characterized by the presence of a domain of unknown function, DUF1640. This domain is a characteristic of the entire protein with the exception of the first twenty-three amino acid residues, which are a mitochondrial targeting site and cleaved. This entry describes 2 isoforms produced by alternative splicing.

**Synonyms:**

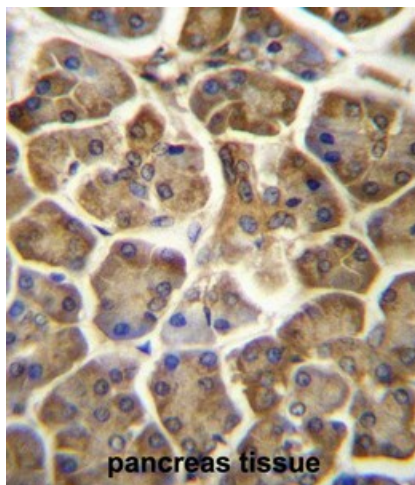
CUA003, MDS011, MDS025

**Protein Families:**

Transmembrane

**Product images:**


CCDC90B Antibody (Center) western blot analysis in WiDr cell line lysates (35ug/lane). This demonstrates the CCDC90B antibody detected the CCDC90B protein (arrow).



CCDC90B Antibody (Center) immunohistochemistry analysis in formalin fixed and paraffin embedded human pancreas tissue followed by peroxidase conjugation of the secondary antibody and DAB staining. This data demonstrates the use of CCDC90B Antibody (Center) for immunohistochemistry. Clinical relevance has not been evaluated.