

Product datasheet for **AP50796PU-N**

CCDC9 (N-term) Rabbit Polyclonal Antibody

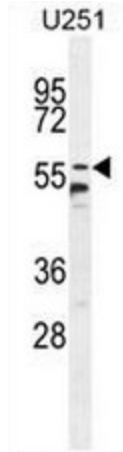
Product data:

Product Type:	Primary Antibodies
Applications:	FC, WB
Recommended Dilution:	ELISA: 1/1000. Western blot: 1/100 - 1/500. Flow Cytometry: 1/10 - 1/50.
Reactivity:	Human, Mouse
Host:	Rabbit
Isotype:	Ig
Clonality:	Polyclonal
Immunogen:	KLH conjugated synthetic peptide between 22-52 amino acids from the N-terminal region of human CCDC9
Specificity:	This antibody reacts to CCDC9.
Formulation:	PBS State: Aff - Purified State: Liquid purified Ig fraction Preservative: 0.09% (W/V) sodium azide
Concentration:	lot specific
Purification:	Affinity chromatography on Protein A
Conjugation:	Unconjugated
Storage:	Store undiluted at 2-8°C for one month or (in aliquots) at -20°C for longer. Avoid repeated freezing and thawing.
Stability:	Shelf life: one year from despatch.
Predicted Protein Size:	59703 Da
Gene Name:	coiled-coil domain containing 9
Database Link:	Entrez Gene 26093 Human Q9Y3X0
Synonyms:	DKFZP586M1019

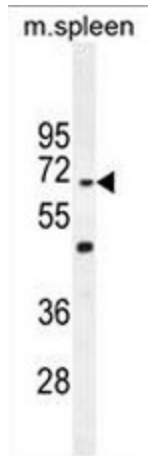


[View online »](#)

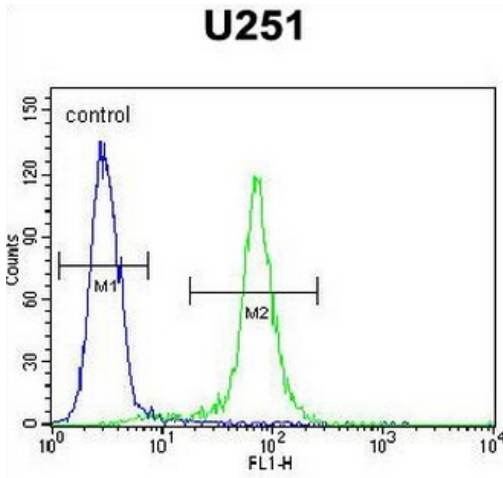
Product images:



CCDC9 Antibody (N-term) western blot analysis in U251 cell line lysates (35ug/lane). This demonstrates the CCDC9 antibody detected the CCDC9 protein (arrow).



CCDC9 Antibody (N-term) western blot analysis in mouse spleen tissue lysates (35ug/lane). This demonstrates the CCDC9 antibody detected the CCDC9 protein (arrow).



CCDC9 Antibody (N-term) flow cytometric analysis of U251 cells (right histogram) compared to a negative control cell (left histogram). FITC-conjugated goat-anti-rabbit secondary antibodies were used for the analysis.