

## Product datasheet for **AP50793PU-N**

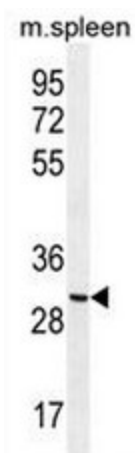
### CCDC84 (N-term) Rabbit Polyclonal Antibody

#### Product data:

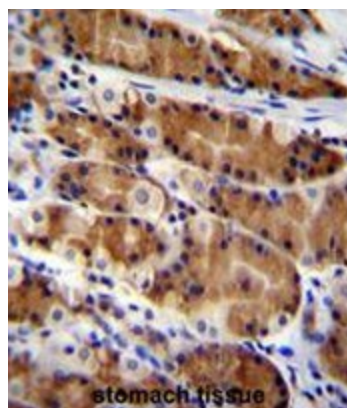
Product Type:	Primary Antibodies
Applications:	IHC, WB
Recommended Dilution:	<b>ELISA:</b> 1/1000. <b>Western blot:</b> 1/100 - 1/500. <b>Immunohistochemistry on paraffin sections:</b> 1/50 - 1/100.
Reactivity:	Human, Mouse
Host:	Rabbit
Isotype:	Ig
Clonality:	Polyclonal
Immunogen:	KLH conjugated synthetic peptide between 41-71 amino acids from the N-terminal region of human CCDC84
Specificity:	This antibody reacts to CCDC84.
Formulation:	PBS State: Aff - Purified State: Liquid purified Ig fraction Preservative: 0.09% (W/V) sodium azide
Concentration:	lot specific
Purification:	Affinity chromatography on Protein A
Conjugation:	Unconjugated
Storage:	Store undiluted at 2-8°C for one month or (in aliquots) at -20°C for longer. Avoid repeated freezing and thawing.
Stability:	Shelf life: one year from despatch.
Predicted Protein Size:	37974 Da
Gene Name:	coiled-coil domain containing 84
Database Link:	<a href="#">Entrez Gene 338657 Human Q86UT8</a>
Synonyms:	DLNB14



[View online »](#)

**Product images:**

CCDC84 Antibody (N-term) western blot analysis in mouse spleen tissue lysates (35ug/lane). This demonstrates the CCDC84 antibody detected the CCDC84 protein (arrow).



CCDC84 Antibody (N-term) immunohistochemistry analysis in formalin fixed and paraffin embedded human stomach tissue followed by peroxidase conjugation of the secondary antibody and DAB staining. This data demonstrates the use of CCDC84 Antibody (N-term) for immunohistochemistry. Clinical relevance has not been evaluated.