

## Product datasheet for **AP50792PU-N**

### CCDC81 (Center) Rabbit Polyclonal Antibody

#### Product data:

<b>Product Type:</b>	Primary Antibodies
<b>Applications:</b>	FC, WB
<b>Recommended Dilution:</b>	<b>ELISA:</b> 1/1000. <b>Western blot:</b> 1/100 –1/500. <b>Flow Cytometry:</b> 1/10 – 1/50.
<b>Reactivity:</b>	Human
<b>Host:</b>	Rabbit
<b>Isotype:</b>	Ig
<b>Clonality:</b>	Polyclonal
<b>Immunogen:</b>	KLH conjugated synthetic peptide between 387–416 amino acids from the Central region of human CCDC81
<b>Specificity:</b>	This antibody reacts to CCDC81.
<b>Formulation:</b>	PBS State: Aff – Purified State: Liquid purified Ig fraction Preservative: 0.09% (W/V) sodium azide
<b>Concentration:</b>	lot specific
<b>Purification:</b>	Affinity chromatography on Protein A
<b>Conjugation:</b>	Unconjugated
<b>Storage:</b>	Store undiluted at 2–8°C for one month or (in aliquots) at –20°C for longer. Avoid repeated freezing and thawing.
<b>Stability:</b>	Shelf life: one year from despatch.
<b>Predicted Protein Size:</b>	76084 Da

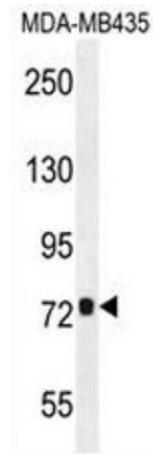


**Gene Name:** coiled-coil domain containing 81

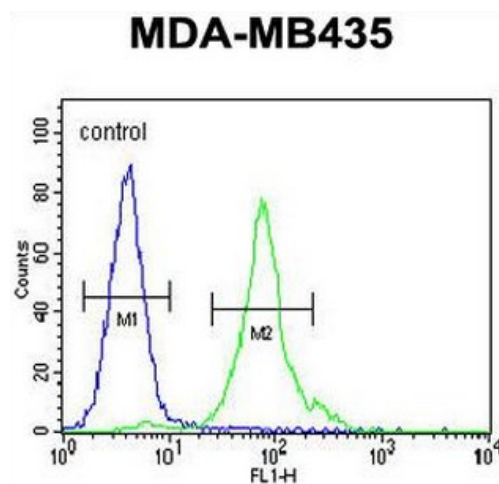
**Database Link:** [Entrez Gene 60494 Human Q6ZN84](#)

**Synonyms:** FLJ16339; FLJ23514

**Product images:**



CCDC81 Antibody (Center) western blot analysis in MDA-MB435 cell line lysates (35ug/lane). This demonstrates the CCDC81 antibody detected the CCDC81 protein (arrow).



CCDC81 Antibody (Center) flow cytometric analysis of MDA-MB435 cells (right histogram) compared to a negative control cell (left histogram). FITC-conjugated goat-anti-rabbit secondary antibodies were used for the analysis.