

Product datasheet for **AP50791PU-N**

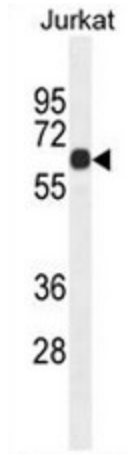
CCDC8 (C-term) Rabbit Polyclonal Antibody

Product data:

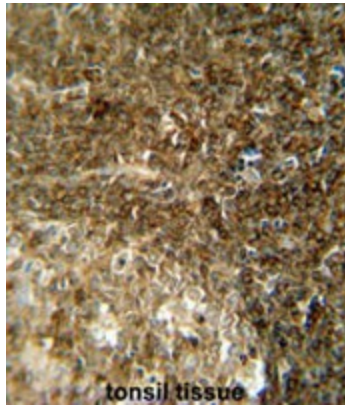
Product Type:	Primary Antibodies
Applications:	IHC, WB
Recommended Dilution:	ELISA: 1/1000. Western blot: 1/100 - 1/500. Immunohistochemistry on paraffin sections: 1/50 - 1/100.
Reactivity:	Human
Host:	Rabbit
Isotype:	Ig
Clonality:	Polyclonal
Immunogen:	KLH conjugated synthetic peptide between 397-426 amino acids from the C-terminal region of human CCDC8
Specificity:	This antibody reacts to CCDC8.
Formulation:	PBS State: Aff - Purified State: Liquid purified Ig fraction Preservative: 0.09% (W/V) sodium azide
Concentration:	lot specific
Purification:	Affinity chromatography on Protein A
Conjugation:	Unconjugated
Storage:	Store undiluted at 2-8°C for one month or (in aliquots) at -20°C for longer. Avoid repeated freezing and thawing.
Stability:	Shelf life: one year from despatch.
Predicted Protein Size:	59374 Da
Gene Name:	coiled-coil domain containing 8
Database Link:	Entrez Gene 83987 Human Q9H0W5
Synonyms:	DKFZp564K0322



[View online »](#)

Product images:

CCDC8 Antibody (C-term) western blot analysis in Jurkat cell line lysates (35ug/lane). This demonstrates the CCDC8 antibody detected the CCDC8 protein (arrow).



CCDC8 antibody (C-term) immunohistochemistry analysis in formalin fixed and paraffin embedded human tonsil tissue followed by peroxidase conjugation of the secondary antibody and DAB staining. This data demonstrates the use of the CCDC8 antibody (C-term) for immunohistochemistry. Clinical relevance has not been evaluated.