

Product datasheet for **AP50783PU-N**

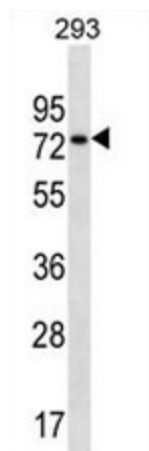
NSRP1 (N-term) Rabbit Polyclonal Antibody

Product data:

Product Type:	Primary Antibodies
Applications:	WB
Recommended Dilution:	ELISA: 1/1000. Western blot: 1/100 - 1/500.
Reactivity:	Human
Host:	Rabbit
Isotype:	Ig
Clonality:	Polyclonal
Immunogen:	KLH conjugated synthetic peptide between 91-121 amino acids from the N-terminal region of human CCDC55
Specificity:	This antibody reacts to CCDC55.
Formulation:	PBS State: Aff - Purified State: Liquid purified Ig fraction Preservative: 0.09% (W/V) sodium azide
Concentration:	lot specific
Purification:	Affinity chromatography on Protein A
Conjugation:	Unconjugated
Storage:	Store undiluted at 2-8°C for one month or (in aliquots) at -20°C for longer. Avoid repeated freezing and thawing.
Stability:	Shelf life: one year from despatch.
Predicted Protein Size:	66390 Da
Gene Name:	nuclear speckle splicing regulatory protein 1
Database Link:	Entrez Gene 84081 Human Q9H0G5
Synonyms:	CCDC55, NSRP70, Nuclear speckle-related protein 70, Nuclear speckle splicing regulatory protein 1, NSrp70



[View online »](#)

Product images:

CCDC55 Antibody (N-term) western blot analysis in 293 cell line lysates (35ug/lane). This demonstrates the CCDC55 antibody detected the CCDC55 protein (arrow).