

Product datasheet for **AP50782PU-N**

CCDC54 (Center) Rabbit Polyclonal Antibody

Product data:

Product Type:	Primary Antibodies
Applications:	FC, IHC, WB
Recommended Dilution:	ELISA: 1/1000. Western blot: 1/100 - 1/500. Immunohistochemistry on paraffin sections: 1/50 - 1/100. Flow Cytometry: 1/10 - 1/50.
Reactivity:	Human
Host:	Rabbit
Isotype:	Ig
Clonality:	Polyclonal
Immunogen:	KLH conjugated synthetic peptide between 98-128 amino acids from the Central region of human CCDC54
Specificity:	This antibody reacts to CCDC54.
Formulation:	PBS State: Aff - Purified State: Liquid purified Ig fraction Preservative: 0.09% (W/V) sodium azide
Concentration:	lot specific
Purification:	Affinity chromatography on Protein A
Conjugation:	Unconjugated
Storage:	Store undiluted at 2-8°C for one month or (in aliquots) at -20°C for longer. Avoid repeated freezing and thawing.
Stability:	Shelf life: one year from despatch.
Predicted Protein Size:	37886 Da
Gene Name:	coiled-coil domain containing 54
Database Link:	Entrez Gene 84692 Human Q8NELO

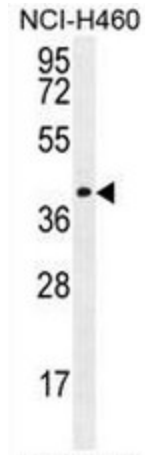


[View online »](#)

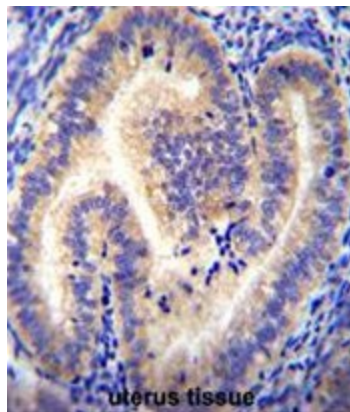
Background: The specific function of CCDC54 (coiled-coil domain containing 54) is not yet known. The CCDC54 gene appears to be conserved in chimpanzee, dog, mouse, and rat.

Synonyms: NYD-SP17

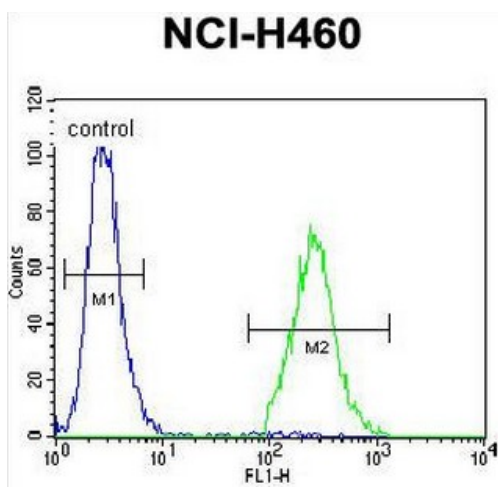
Product images:



CCDC54 Antibody (Center) western blot analysis in NCI-H460 cell line lysates (35ug/lane). This demonstrates the CCDC54 antibody detected the CCDC54 protein (arrow).



CCDC54 Antibody (Center) immunohistochemistry analysis in formalin fixed and paraffin embedded human uterus tissue followed by peroxidase conjugation of the secondary antibody and DAB staining. This data demonstrates the use of CCDC54 Antibody (Center) for immunohistochemistry. Clinical relevance has not been evaluated.



CCDC54 Antibody (Center) flow cytometric analysis of NCI-H460 cells (right histogram) compared to a negative control cell (left histogram). FITC-conjugated goat-anti-rabbit secondary antibodies were used for the analysis.