

Product datasheet for **AP50781PU-N**

CCDC46 (CEP112) (N-term) Rabbit Polyclonal Antibody

Product data:

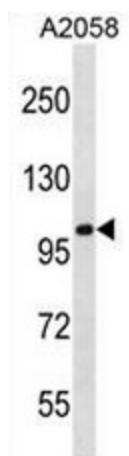
| | |
|-------------------------|---|
| Product Type: | Primary Antibodies |
| Applications: | WB |
| Recommended Dilution: | ELISA: 1/1000. Western blot: 1/100 - 1/500. |
| Reactivity: | Human |
| Host: | Rabbit |
| Isotype: | Ig |
| Clonality: | Polyclonal |
| Immunogen: | KLH conjugated synthetic peptide between 285-314 amino acids from the N-terminal region of human CCDC46 |
| Specificity: | This antibody reacts to CCDC46. |
| Formulation: | PBS State: Aff - Purified State: Liquid purified Ig fraction Preservative: 0.09% (W/V) sodium azide |
| Concentration: | lot specific |
| Purification: | Affinity chromatography on Protein A |
| Conjugation: | Unconjugated |
| Storage: | Store undiluted at 2-8°C for one month or (in aliquots) at -20°C for longer. Avoid repeated freezing and thawing. |
| Stability: | Shelf life: one year from despatch. |
| Predicted Protein Size: | 112749 Da |
| Gene Name: | centrosomal protein 112 |
| Database Link: | Entrez Gene 201134 Human Q8N8E3 |
| Background: | CCDC46 is a protein with filament, myosin tail and ATPase domains. Orthologs of this gene exist in mouse, rat and chimp. Alternate transcriptional splice variants, encoding different isoforms, have been characterized. |



[View online »](#)

Synonyms: 1700001M19Rik; 1700029K01Rik; 8430407H02Rik; AV043680; AV207351; Ccdc46; Macoco; RGD1564168

Product images:



CCDC46 Antibody (N-term) western blot analysis in A2058 cell line lysates (35ug/lane). This demonstrates the CCDC46 antibody detected the CCDC46 protein (arrow).