

Product datasheet for **AP50778PU-N**

CCDC39 (C-term) Rabbit Polyclonal Antibody

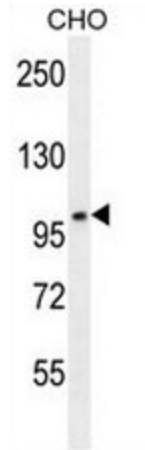
Product data:

Product Type:	Primary Antibodies
Applications:	WB
Recommended Dilution:	ELISA: 1/1000. Western blot: 1/100 - 1/500.
Reactivity:	Hamster, Human, Mouse
Host:	Rabbit
Isotype:	Ig
Clonality:	Polyclonal
Immunogen:	KLH conjugated synthetic peptide between 770-798 amino acids from the C-terminal region of human CCDC39
Specificity:	This antibody reacts to CCDC39.
Formulation:	PBS State: Aff - Purified State: Liquid purified Ig fraction Preservative: 0.09% (W/V) sodium azide
Concentration:	lot specific
Purification:	Affinity chromatography on Protein A
Conjugation:	Unconjugated
Storage:	Store undiluted at 2-8°C for one month or (in aliquots) at -20°C for longer. Avoid repeated freezing and thawing.
Stability:	Shelf life: one year from despatch.
Predicted Protein Size:	109901 Da
Gene Name:	coiled-coil domain containing 39
Database Link:	Entrez Gene 51938 Mouse Entrez Gene 339829 Human Q9UFE4
Synonyms:	Coiled-coil domain-containing protein 39

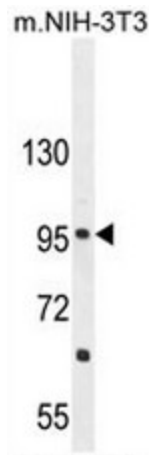


[View online »](#)

Product images:



CCDC39 Antibody (C-term) western blot analysis in CHO cell line lysates (35ug/lane). This demonstrates the CCDC39 antibody detected the CCDC39 protein (arrow).



CCDC39 Antibody (C-term) western blot analysis in mouse NIH-3T3 cell line lysates (35ug/lane). This demonstrates the CCDC39 antibody detected the CCDC39 protein (arrow).