

Product datasheet for **AP50776PU-N**

CCDC37 (CFAP100) (N-term) Rabbit Polyclonal Antibody

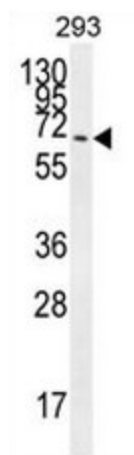
Product data:

Product Type:	Primary Antibodies
Applications:	WB
Recommended Dilution:	ELISA: 1/1000. Western blot: 1/100 - 1/500.
Reactivity:	Human
Host:	Rabbit
Isotype:	Ig
Clonality:	Polyclonal
Immunogen:	KLH conjugated synthetic peptide between 23-53 amino acids from the N-terminal region of human CCDC37
Specificity:	This antibody reacts to CCDC37.
Formulation:	PBS State: Aff - Purified State: Liquid purified Ig fraction Preservative: 0.09% (W/V) sodium azide
Concentration:	lot specific
Purification:	Affinity chromatography on Protein A
Conjugation:	Unconjugated
Storage:	Store undiluted at 2-8°C for one month or (in aliquots) at -20°C for longer. Avoid repeated freezing and thawing.
Stability:	Shelf life: one year from despatch.
Predicted Protein Size:	71117 Da
Gene Name:	cilia and flagella associated protein 100
Database Link:	<u>Entrez Gene 348807 Human Q494V2</u>



[View online »](#)

Product images:



CCDC37 Antibody (N-term) western blot analysis in 293 cell line lysates (35ug/lane). This demonstrates the CCDC37 antibody detected the CCDC37 protein (arrow).