

## Product datasheet for **AP50773PU-N**

### CCDC19 (CFAP45) (N-term) Rabbit Polyclonal Antibody

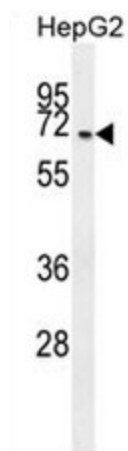
#### Product data:

|                         |   |
|-------------------------|---|
| Product Type:           | Primary Antibodies  |
| Applications:           | IHC, WB   |
| Recommended Dilution:   | <b>ELISA:</b> 1/1000.<br><b>Western blot:</b> 1/100 - 1/500.<br><b>Immunohistochemistry on paraffin sections:</b> 1/50 - 1/100. |
| Reactivity:             | Human   |
| Host:                   | Rabbit  |
| Isotype:                | Ig  |
| Clonality:              | Polyclonal  |
| Immunogen:              | KLH conjugated synthetic peptide between 113-143 amino acids from the N-terminal region of human CCDC19                         |
| Specificity:            | This antibody reacts to CCDC19.   |
| Formulation:            | PBS<br>State: Aff - Purified<br>State: Liquid purified Ig fraction<br>Preservative: 0.09% (W/V) sodium azide                    |
| Concentration:          | lot specific  |
| Purification:           | Affinity chromatography on Protein A  |
| Conjugation:            | Unconjugated  |
| Storage:                | Store undiluted at 2-8°C for one month or (in aliquots) at -20°C for longer.<br>Avoid repeated freezing and thawing.            |
| Stability:              | Shelf life: one year from despatch.   |
| Predicted Protein Size: | 65730 Da  |
| Gene Name:              | cilia and flagella associated protein 45  |
| Database Link:          | <a href="#">Entrez Gene 25790 Human</a><br><a href="#">Q9UL16</a>   |
| Synonyms:               | NESG1   |

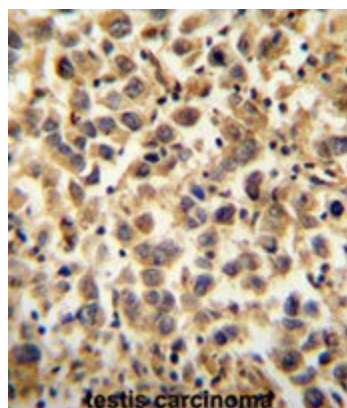


[View online »](#)

## Product images:



CCDC19 Antibody (N-term) western blot analysis in HepG2 cell line lysates (35ug/lane). This demonstrates the CCDC19 antibody detected the CCDC19 protein (arrow).



CCDC19 Antibody (N-term) immunohistochemistry analysis in formalin fixed and paraffin embedded human testis carcinoma followed by peroxidase conjugation of the secondary antibody and DAB staining. This data demonstrates the use of the CCDC19 Antibody (N-term) for immunohistochemistry. Clinical relevance has not been evaluated.