

Product datasheet for **AP50772PU-N**

CCDC17 (C-term) Rabbit Polyclonal Antibody

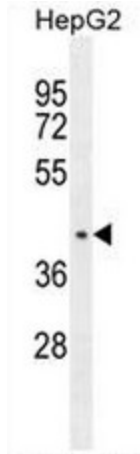
Product data:

Product Type:	Primary Antibodies
Applications:	FC, IHC, WB
Recommended Dilution:	ELISA: 1/1000. Western blot: 1/100 - 1/500. Immunohistochemistry on paraffin sections: 1/50 - 1/100. Flow Cytometry: 1/10 - 1/50.
Reactivity:	Human
Host:	Rabbit
Isotype:	Ig
Clonality:	Polyclonal
Immunogen:	KLH conjugated synthetic peptide between 439-477 amino acids from the C-terminal region of human CCDC17
Specificity:	This antibody reacts to CCDC17.
Formulation:	PBS State: Aff - Purified State: Liquid purified Ig fraction Preservative: 0.09% (W/V) sodium azide
Concentration:	lot specific
Purification:	Affinity chromatography on Protein A
Conjugation:	Unconjugated
Storage:	Store undiluted at 2-8°C for one month or (in aliquots) at -20°C for longer. Avoid repeated freezing and thawing.
Stability:	Shelf life: one year from despatch.
Predicted Protein Size:	67721 Da ;Isoform 47kd Da
Gene Name:	coiled-coil domain containing 17
Database Link:	Entrez Gene 149483 Human Q96LX7
Synonyms:	FLJ17921; FLJ33084

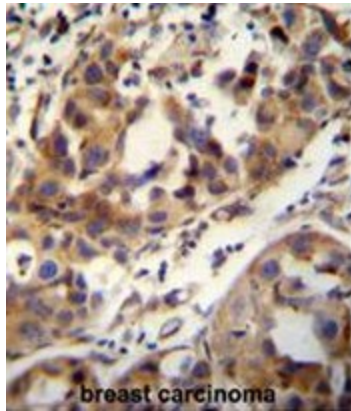


[View online »](#)

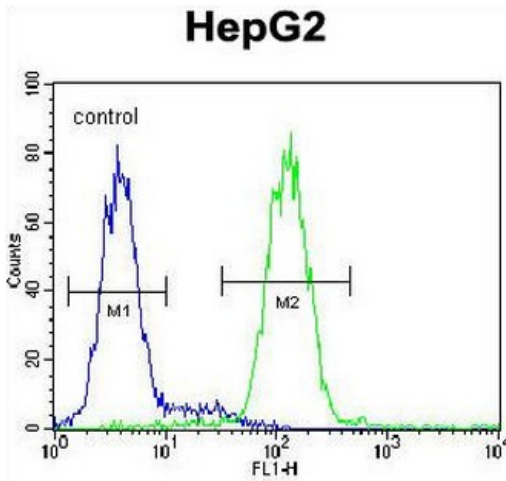
Product images:



CCDC17 Antibody (C-term) western blot analysis in HepG2 cell line lysates (35ug/lane). This demonstrates the CCDC17 antibody detected the CCDC17 protein (arrow).



CCDC17 antibody (C-term) immunohistochemistry analysis in formalin fixed and paraffin embedded human breast carcinoma followed by peroxidase conjugation of the secondary antibody and DAB staining. This data demonstrates the use of the CCDC17 antibody (C-term) for immunohistochemistry. Clinical relevance has not been evaluated.



CCDC17 Antibody (C-term) flow cytometric analysis of HepG2 cells (right histogram) compared to a negative control cell (left histogram). FITC-conjugated goat-anti-rabbit secondary antibodies were used for the analysis.