

## Product datasheet for **AP50768PU-N**

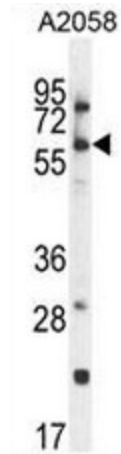
### CCDC148 (Center) Rabbit Polyclonal Antibody

#### Product data:

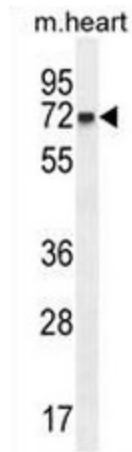
Product Type:	Primary Antibodies
Applications:	FC, WB
Recommended Dilution:	<b>ELISA:</b> 1/1000. <b>Western blot:</b> 1/100 - 1/500. <b>Flow Cytometry:</b> 1/10 - 1/50.
Reactivity:	Human, Mouse
Host:	Rabbit
Isotype:	Ig
Clonality:	Polyclonal
Immunogen:	KLH conjugated synthetic peptide between 286-316 amino acids from the Central region of human CCDC148
Specificity:	This antibody reacts to CCDC148.
Formulation:	PBS State: Aff - Purified State: Liquid purified Ig fraction Preservative: 0.09% (W/V) sodium azide
Concentration:	lot specific
Purification:	Affinity chromatography on Protein A
Conjugation:	Unconjugated
Storage:	Store undiluted at 2-8°C for one month or (in aliquots) at -20°C for longer. Avoid repeated freezing and thawing.
Stability:	Shelf life: one year from despatch.
Predicted Protein Size:	71104 Da
Gene Name:	coiled-coil domain containing 148
Database Link:	<a href="#">Entrez Gene 130940 Human Q8NFR7</a>
Synonyms:	MGC125588; MGC125590



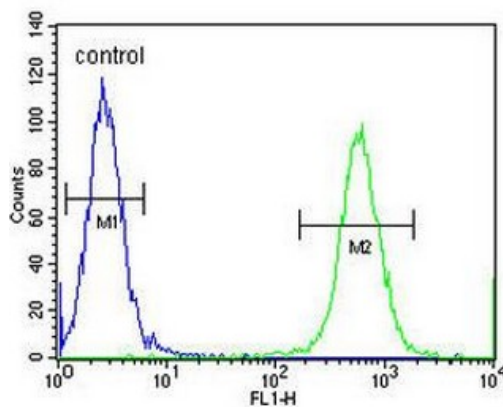
[View online »](#)

**Product images:**


CCDC148 Antibody (Center) western blot analysis in A2058 cell line lysates (35ug/lane). This demonstrates the CCDC148 antibody detected the CCDC148 protein (arrow).



CCDC148 Antibody (Center) western blot analysis in mouse heart tissue lysates (35ug/lane). This demonstrates the CCDC148 antibody detected the CCDC148 protein (arrow).

**A2058**


CCDC148 Antibody (Center) flow cytometric analysis of A2058 cells (right histogram) compared to a negative control cell (left histogram). FITC-conjugated goat-anti-rabbit secondary antibodies were used for the analysis.