

Product datasheet for **AP50767PU-N**

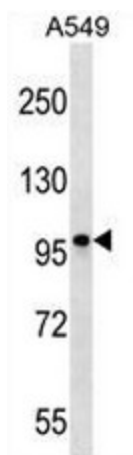
CCDC141 (N-term) Rabbit Polyclonal Antibody

Product data:

Product Type:	Primary Antibodies
Applications:	WB
Recommended Dilution:	ELISA: 1/1000. Western blot: 1/100 - 1/500.
Reactivity:	Human
Host:	Rabbit
Isotype:	Ig
Clonality:	Polyclonal
Immunogen:	KLH conjugated synthetic peptide between 1-30 amino acids from the N-terminal region of human CCDC141
Specificity:	This antibody reacts to CCDC141.
Formulation:	PBS State: Aff - Purified State: Liquid purified Ig fraction Preservative: 0.09% (W/V) sodium azide
Concentration:	lot specific
Purification:	Affinity chromatography on Protein A
Conjugation:	Unconjugated
Storage:	Store undiluted at 2-8°C for one month or (in aliquots) at -20°C for longer. Avoid repeated freezing and thawing.
Stability:	Shelf life: one year from despatch.
Predicted Protein Size:	100581 Da
Gene Name:	coiled-coil domain containing 141
Database Link:	Entrez Gene 285025 Human Q6ZP82
Synonyms:	FLJ26337; FLJ39502; MGC134803



[View online »](#)

Product images:

CCDC141 Antibody (N-term) western blot analysis in A549 cell line lysates (35ug/lane). This demonstrates the CCDC141 antibody detected the CCDC141 protein (arrow).