

## Product datasheet for **AP50766PU-N**

### CCDC140 (N-term) Rabbit Polyclonal Antibody

#### Product data:

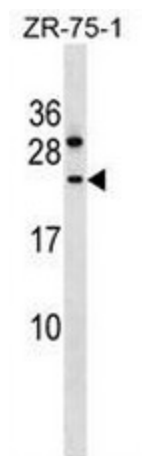
Product Type:	Primary Antibodies
Applications:	WB
Recommended Dilution:	<b>ELISA:</b> 1/1000. <b>Western blot:</b> 1/100 - 1/500.
Reactivity:	Human
Host:	Rabbit
Isotype:	Ig
Clonality:	Polyclonal
Immunogen:	KLH conjugated synthetic peptide between 30-60 amino acids from the N-terminal region of human CCDC140
Specificity:	This antibody reacts to CCDC140.
Formulation:	PBS State: Aff - Purified State: Liquid purified Ig fraction Preservative: 0.09% (W/V) sodium azide
Concentration:	lot specific
Purification:	Affinity chromatography on Protein A
Conjugation:	Unconjugated
Storage:	Store undiluted at 2-8°C for one month or (in aliquots) at -20°C for longer. Avoid repeated freezing and thawing.
Stability:	Shelf life: one year from despatch.
Predicted Protein Size:	18252 Da
Gene Name:	coiled-coil domain containing 140
Database Link:	<a href="#">Entrez Gene 151278 Human Q96MF4</a>
Background:	CCDC140 Antibody (N-term) (Cat. #AP16571a) western blot analysis in ZR-75-1 cell line lysates (35ug/lane). This demonstrates the CCDC140 antibody detected the CCDC140 protein (arrow).



[View online »](#)

**Synonyms:** Coiled-coil domain-containing protein 140

**Product images:**



CCDC140 Antibody (N-term) western blot analysis in ZR-75-1 cell line lysates (35ug/lane). This demonstrates the CCDC140 antibody detected the CCDC140 protein (arrow).